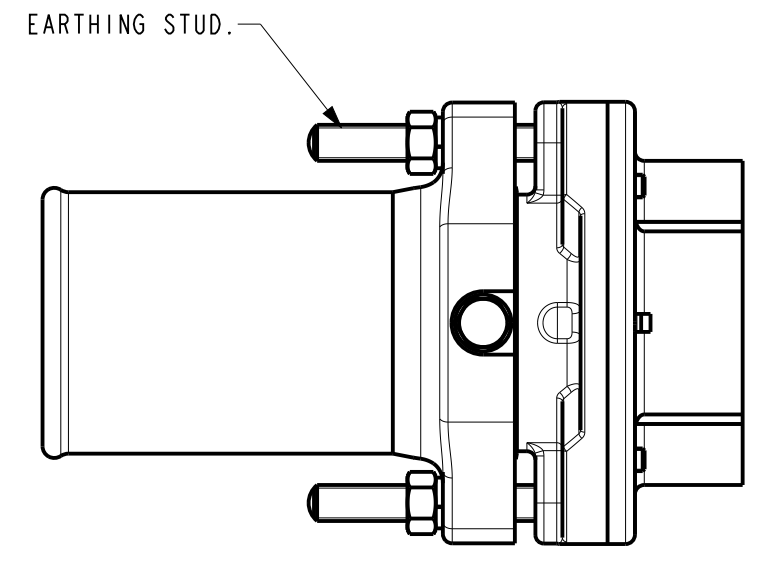
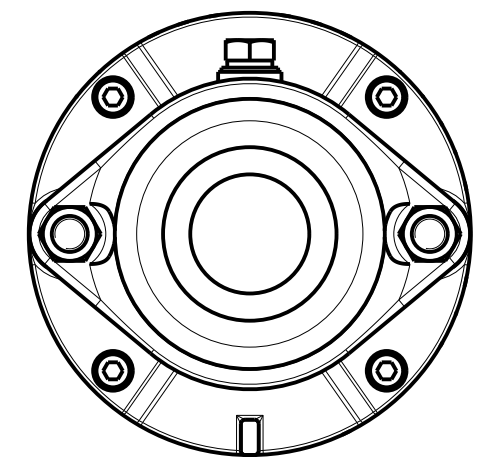


SECTION Z-Z



SEE SHEET 2 - 33MK1A WITH UN-ARMoured GLAND ARRANGEMENT.
 SEE SHEET 3 - 33MK1A & AFA33A LAYOUTS.
 SEE SHEET 4 - 33MK1A COUPLER & AFA33A ADAPTOR WITH CENTRE PILOT.

DRAWING No.	ISSUE No.
CP291	1

CERTIFICATE RELATED DRAWING
 NO MODIFICATIONS PERMITTED WITHOUT THE APPROVAL OF THE TECHNICAL MANAGER

DO NOT SCALE

DIMENSIONS IN MILLIMETRES (mm)
 MAXIMUM MACHINED SURFACE
 TEXTURE $\mu\text{m Ra } 3.2$
 MACHINE WHERE MARKED THUS ✓
 ANGULAR TOLERANCES $\pm 1/2^\circ$

DIMENSIONAL TOLERANCES UNLESS OTHERWISE STATED
 UPTO 6 ± 0.1
 OVER 6 UPTO 30 ± 0.2
 OVER 30 UPTO 100 ± 0.3
 OVER 100 UPTO 300 ± 0.5
 OVER 300 ± 0.8

TEST No.	PROCESS No.
200	---
DRAWN	AER
DATE	5/1/05
CHECKED	5/1/05 AER
APPROVED	5/1/05 AER
SCALE	3:8

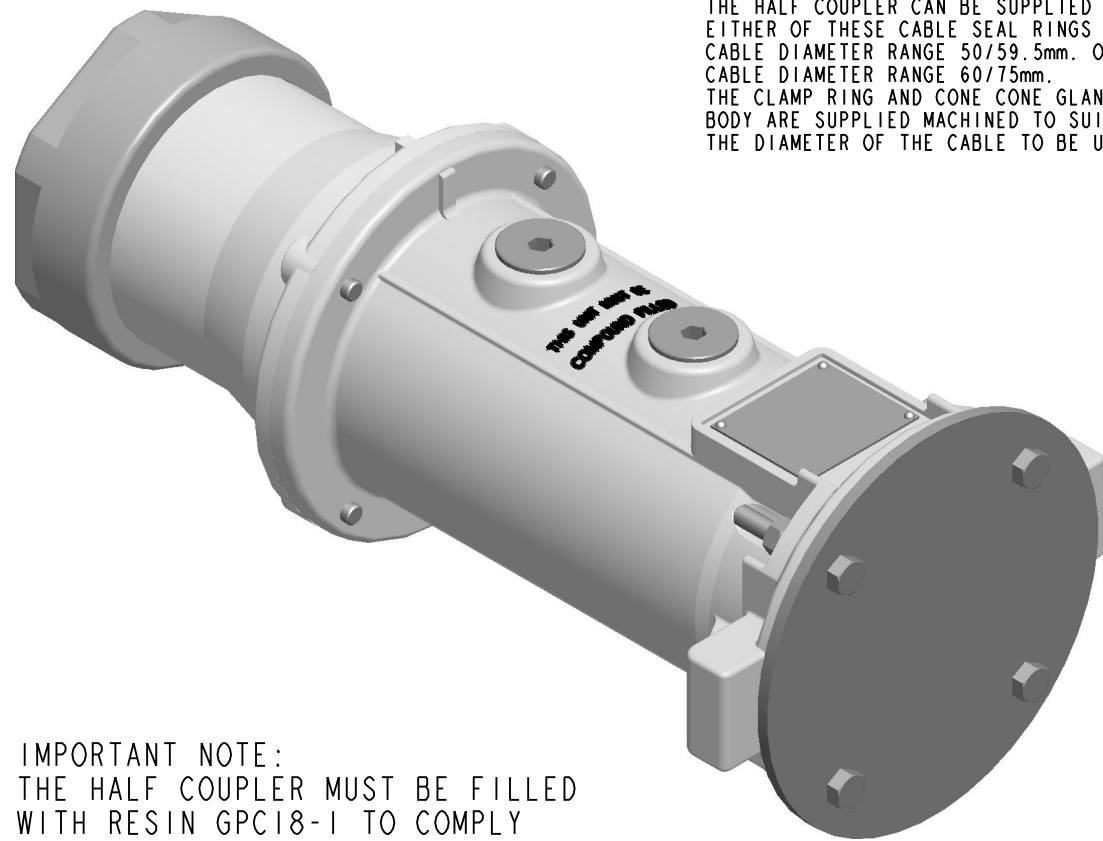
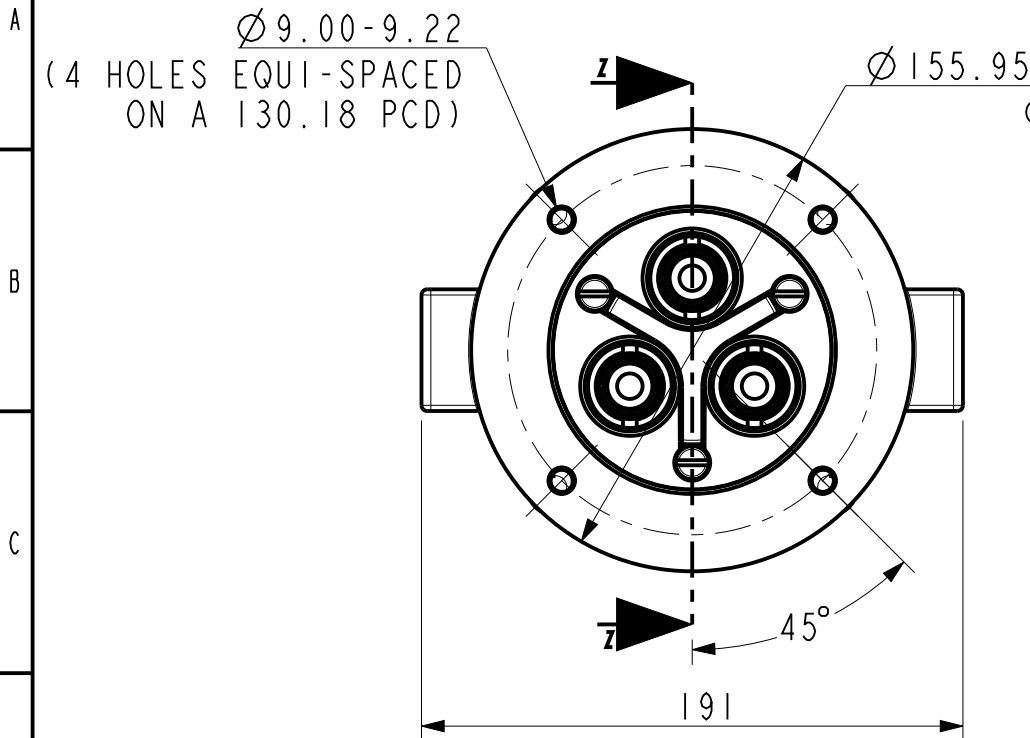
DCR	DRN	5/1/05	AER
CHK	5/1/05	AER	APP
		5/1/05	AER

DRAWING INTRODUCED.
 SHEET 2 ADDED.

33MK1A HALF COUPLER - PWA
 GLAND ARRANGEMENT

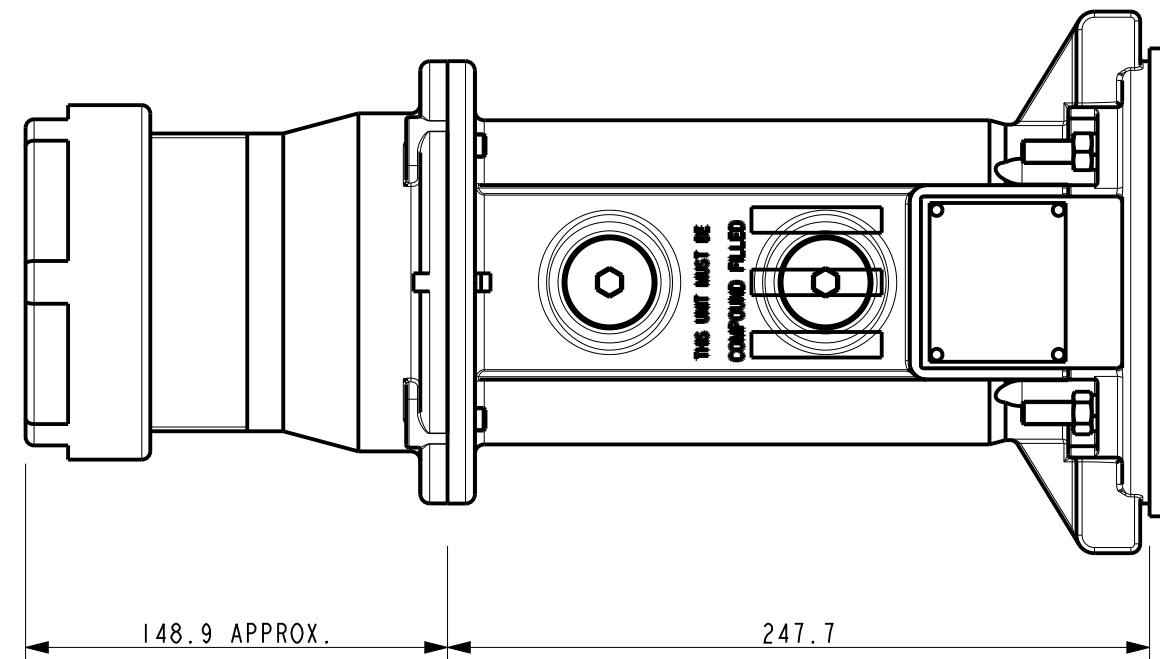
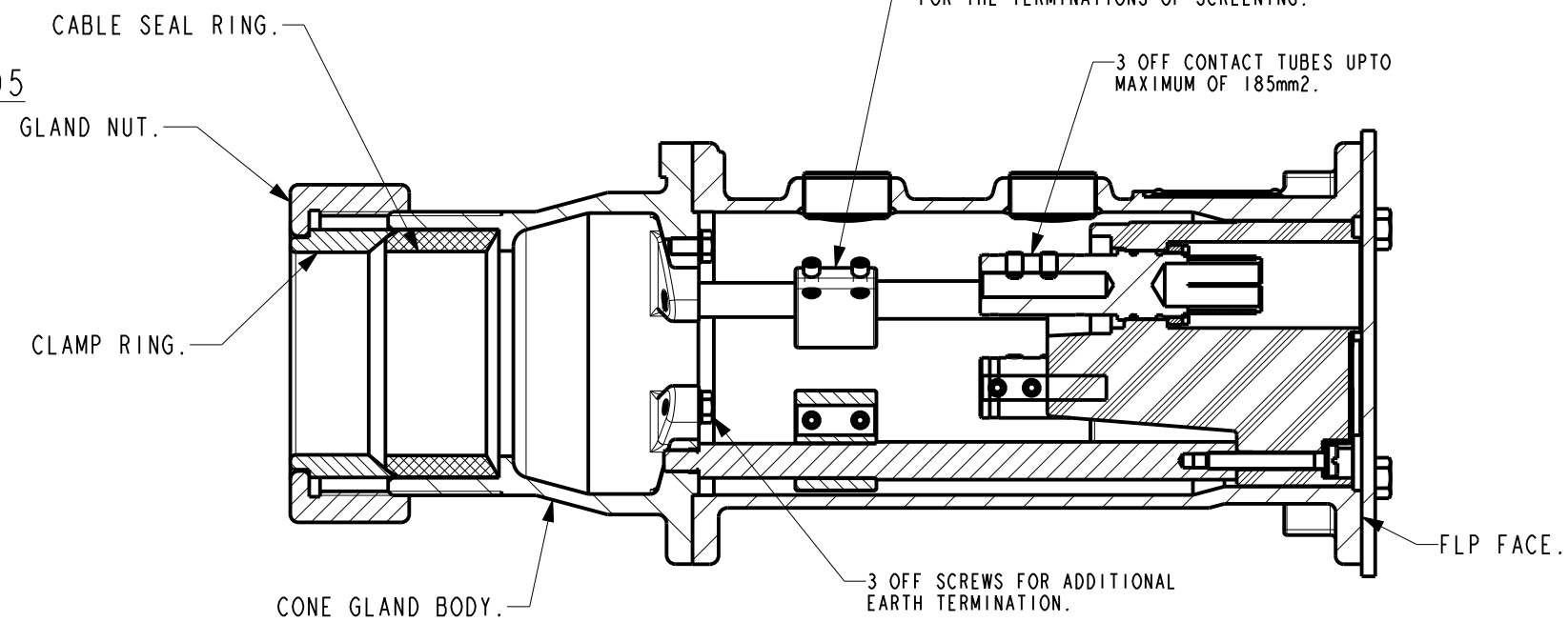
Victor Victor Products Limited
 Unit 3A, Tyne Dock East Side,
 Port of Tyne, South Shields,
 Tyne and Wear, NE33 5SQ,
 United Kingdom.

DRAWING No.	ISSUE No.
SHEET 1 OF 4	
CP291	1



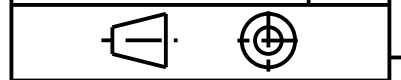
THE HALF COUPLER CAN BE SUPPLIED WITH EITHER OF THESE CABLE SEAL RINGS FITTED:
CABLE DIAMETER RANGE 50/59.5mm. OR
CABLE DIAMETER RANGE 60/75mm.
THE CLAMP RING AND CONE GLAND BODY ARE SUPPLIED MACHINED TO SUIT THE DIAMETER OF THE CABLE TO BE USED.

IMPORTANT NOTE:
THE HALF COUPLER MUST BE FILLED WITH RESIN GPC18-1 TO COMPLY WITH CERTIFICATION.



SEE SHEET 1 - FOR PWA GLAND ARRANGEMENTS.
SEE SHEET 3 - 33MKIA & AFA33A LAYOUTS.
SEE SHEET 4 - 33MKIA COUPLER & AFA33A ADAPTOR WITH CENTRE PILOT.

DRAWING No.	ISSUE No.
CP291	1



CERTIFICATE RELATED DRAWING

NO MODIFICATIONS PERMITTED WITHOUT THE APPROVAL OF THE TECHNICAL MANAGER

DO NOT SCALE

DIMENSIONS IN MILLIMETRES (mm)
MAXIMUM MACHINED SURFACE
TEXTURE um Ra 3.2
MACHINE WHERE MARKED THUS ✓

ANGULAR TOLERANCES ±1/2°

DIMENSIONAL TOLERANCES UNLESS OTHERWISE STATED

UPTO 6	±0.1
OVER 6 UPTO 30	±0.2
OVER 30 UPTO 100	±0.3
OVER 100 UPTO 300	±0.5
OVER 300	±0.8

TEST No.	PROCESS No.
200	---

DRAWN	AER
DATE	14/1/11
CHECKED	14/1/11 AER
APPROVED	14/1/44 AER
SCALE	3:8

DCR	DRN	14/1/11	AER
CHK	14/1/11	AER	APP
	14/1/11		AER

SHEET 2 ADDED.

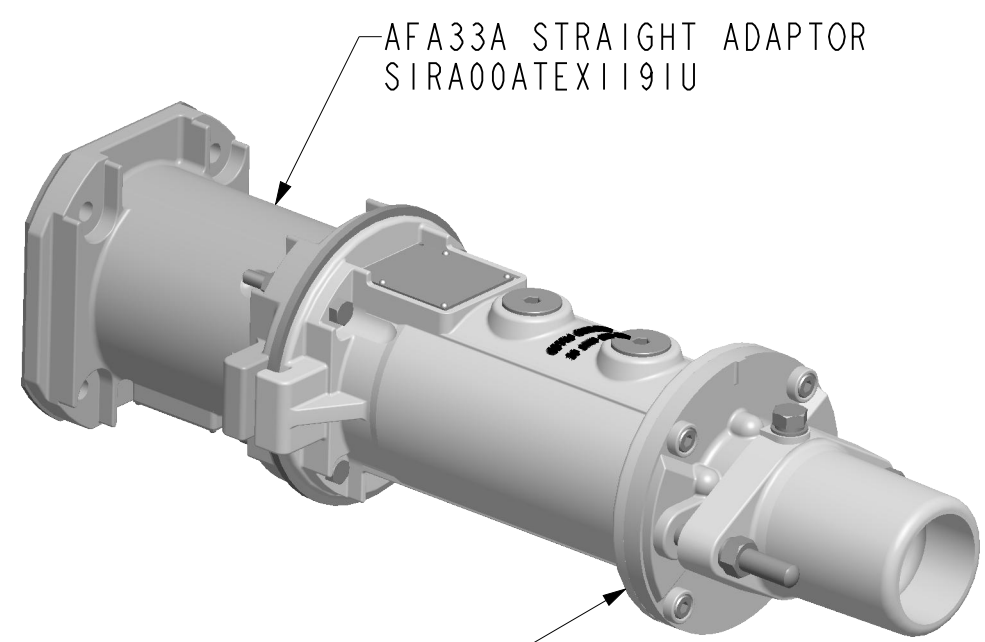
33MKIA FLP HALF COUPLER

Victor Victor Products Limited
Unit 3A, Tyne Dock East Side,
Port of Tyne, South Shields,
Tyne and Wear, NE33 5SQ,
United Kingdom.

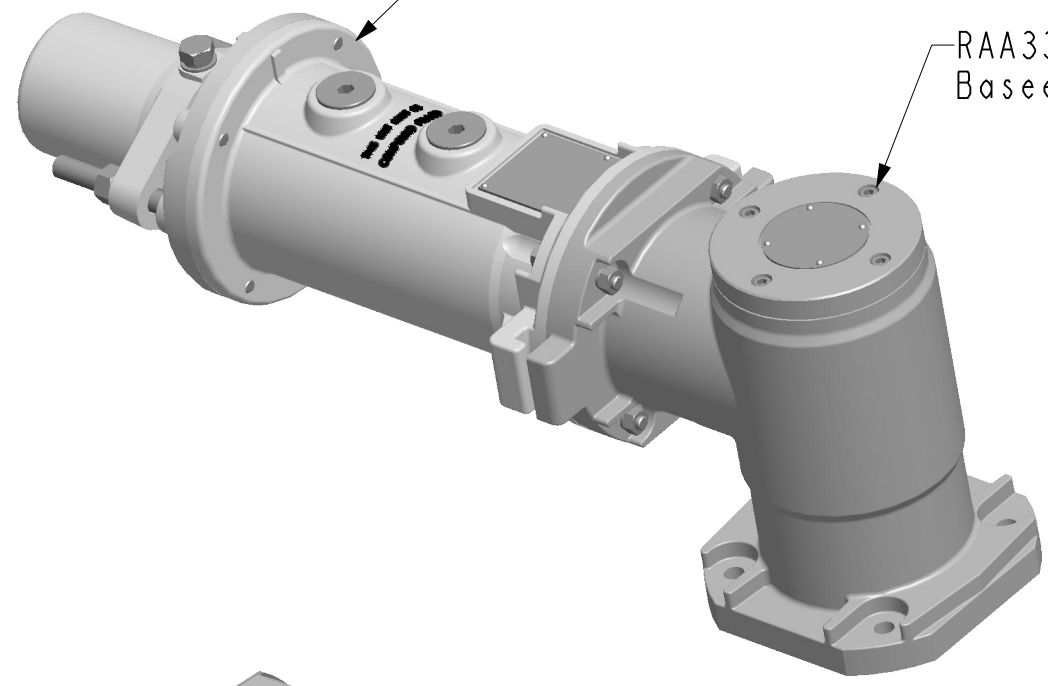
DRAWING No.	ISSUE No.
SHEET 2 OF 4	
CP291	1

A
B
C
D
E
F
G
H

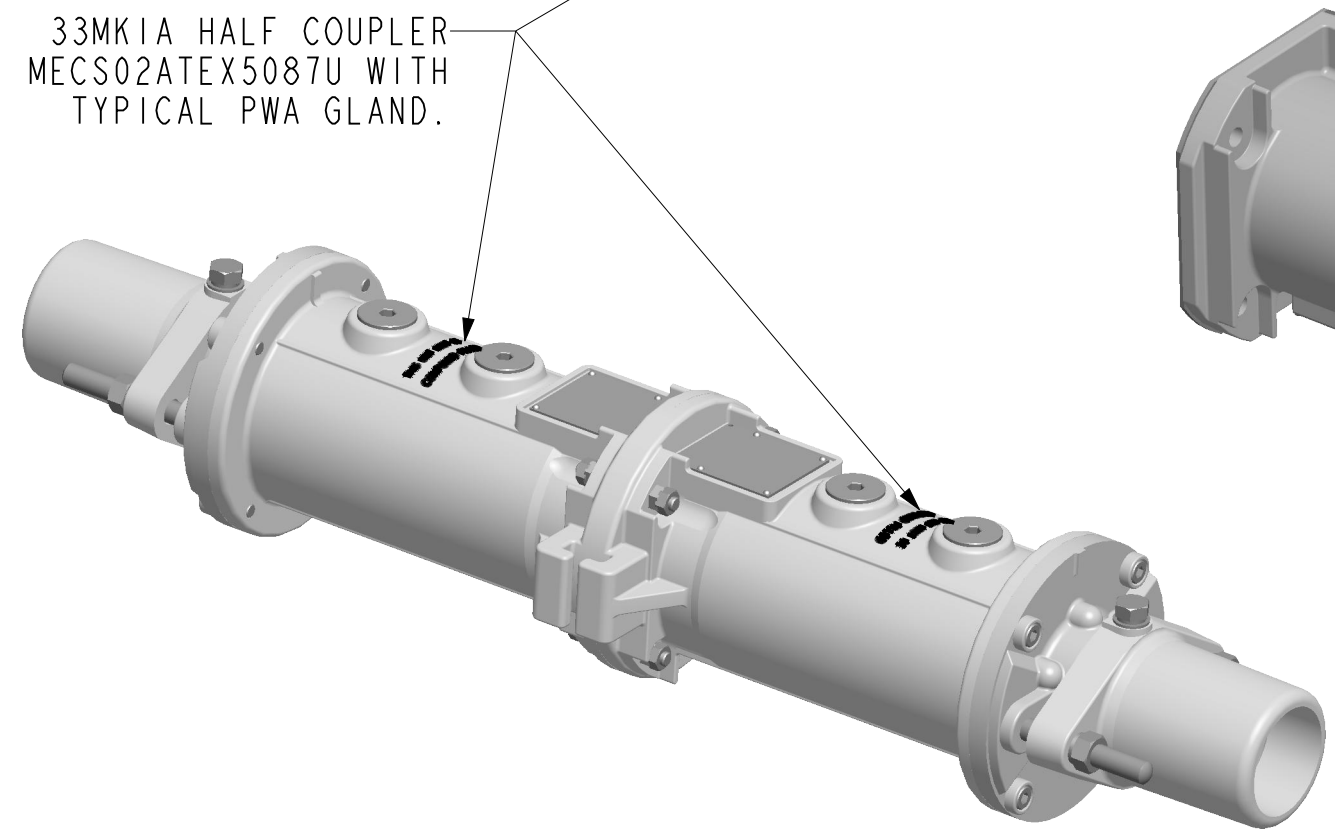
A
B
C
D
E
F
G
H



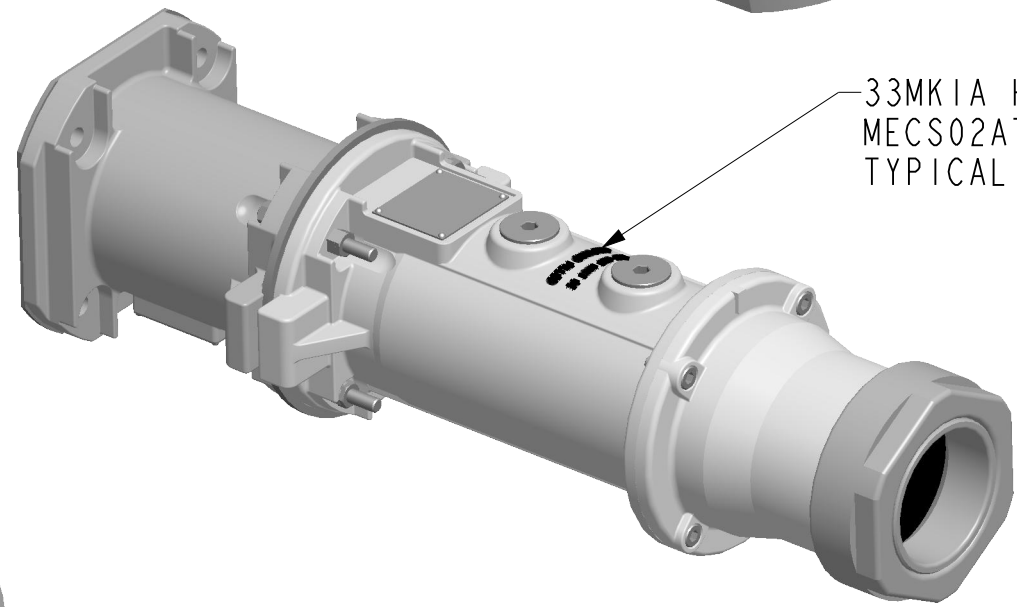
AFA33A STRAIGHT ADAPTOR
SIRA00ATEX1191U



RAA33 RIGHT ANGLED ADAPTOR
Base fa03ATEX0244U



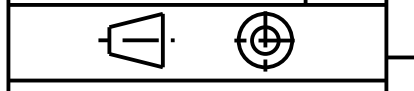
33MK1A HALF COUPLER
MECS02ATEX5087U WITH
TYPICAL PWA GLAND.



33MK1A HALF COUPLER
MECS02ATEX5087U WITH
TYPICAL UNARMoured GLAND.

SEE SHEET 1 - FOR PWA GLAND ARRANGEMENTS.
SEE SHEET 2 - 33MK1A WITH UN-ARMoured GLAND ARRANGEMENT.
SEE SHEET 4 - 33MK1A COUPLER & AFA33A ADAPTOR WITH CENTRE PILOT.

DRAWING No.	ISSUE No.
CP291	1



CERTIFICATE RELATED DRAWING

NO MODIFICATIONS PERMITTED
WITHOUT THE APPROVAL OF
THE TECHNICAL MANAGER

DO NOT SCALE

DIMENSIONS IN MILLIMETRES (mm)
MAXIMUM MACHINED SURFACE
TEXTURE $\mu\text{m Ra } 3.2$
MACHINE WHERE MARKED THUS

ANGULAR TOLERANCES $\pm 1/2^\circ$

DIMENSIONAL TOLERANCES UNLESS OTHERWISE STATED	
UPTO 6	± 0.1
OVER 6 UPTO 30	± 0.2
OVER 30 UPTO 100	± 0.3
OVER 100 UPTO 300	± 0.5
OVER 300	± 0.8

TEST No.	PROCESS No.
200	---

DRAWN	AER
-------	-----

DATE	5/7/11
------	--------

CHECKED	5/7/11 AER
---------	------------

APPROVED	5/7/11 AER
----------	------------

SCALE	3:8
-------	-----

DCR	DRN	5/7/11	AER
CHK	5/7/11	AER	APP
		5/7/11	AER

SHEET 3 INTRODUCED.

DETAILS OF VARIOUS 3.3Kv LAYOUTS.

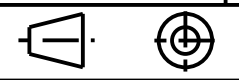


Victor Products Limited
Unit 3A, Tyne Dock East Side,
Port of Tyne, South Shields,
Tyne and Wear, NE33 5SQ,
United Kingdom.

DRAWING No.	ISSUE No.
SHEET 3 OF 4	

CP291	1
-------	---

DRAWING No.	ISSUE No.
CP291	1



CERTIFICATE RELATED DRAWING

NO MODIFICATIONS PERMITTED WITHOUT THE APPROVAL OF THE TECHNICAL MANAGER

DO NOT SCALE

DIMENSIONS IN MILLIMETRES (mm)
 MAXIMUM MACHINED SURFACE
 TEXTURE $\mu\text{m Ra } 3.2$
 MACHINE WHERE MARKED THUS ✓

ANGULAR TOLERANCES $\pm 1/2^\circ$

DIMENSIONAL TOLERANCES UNLESS OTHERWISE STATED

UPTO 6	± 0.1
OVER 6 UPTO 30	± 0.2
OVER 30 UPTO 100	± 0.3
OVER 100 UPTO 300	± 0.5
OVER 300	± 0.8

TEST No.	PROCESS No.
----------	-------------

200	---
-----	-----

DRAWN	AER
-------	-----

DATE	1/8/11
------	--------

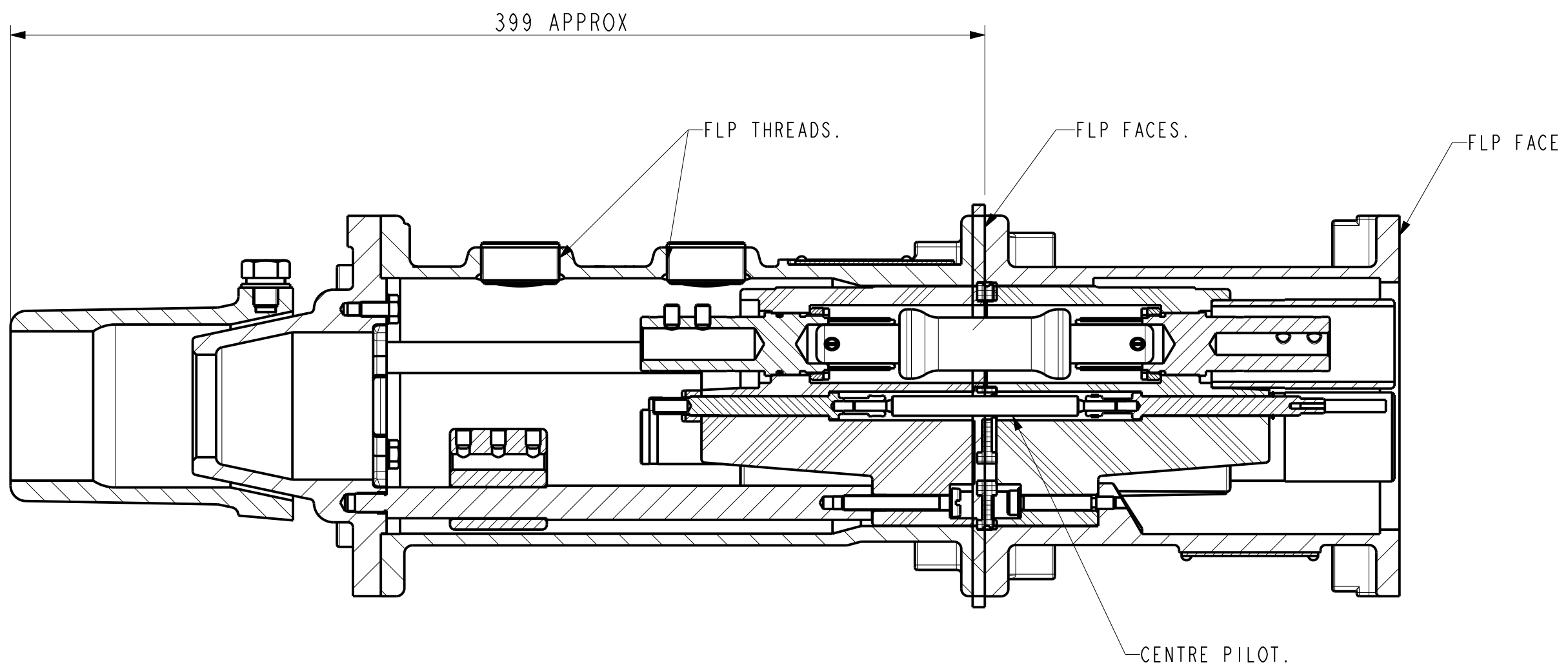
CHECKED	1/8/11 AER
---------	------------

APPROVED	1/8/11 AER
----------	------------

SCALE	3:8
-------	-----

DRAWING No.	ISSUE No.
SHEET 4 OF 4	

CP291	1
-------	---



SECTION Z-Z

IMPORTANT NOTE:
 THE HALF COUPLER MUST BE FILLED WITH RESIN GPC18-1 TO COMPLY WITH CERTIFICATION.

SEE SHEET 1 - FOR PWA GLAND ARRANGEMENTS.
 SEE SHEET 2 - 33MKIA WITH UN-ARMoured GLAND ARRANGEMENT.
 SEE SHEET 3 - 33MKIA & AFA33A LAYOUTS.

DCR	DRN	1/8/11	AER
CHK	1/8/11	AER	APP
	1/8/11		AER

DRAWING INTRODUCED.

TYPICAL HALF COUPLER & ADAPTOR ARRANGEMENT WITH PILOT.

Victor Victor Products Limited
 Unit 3A, Tyne Dock East Side,
 Port of Tyne, South Shields,
 Tyne and Wear, NE33 5SQ,
 United Kingdom.