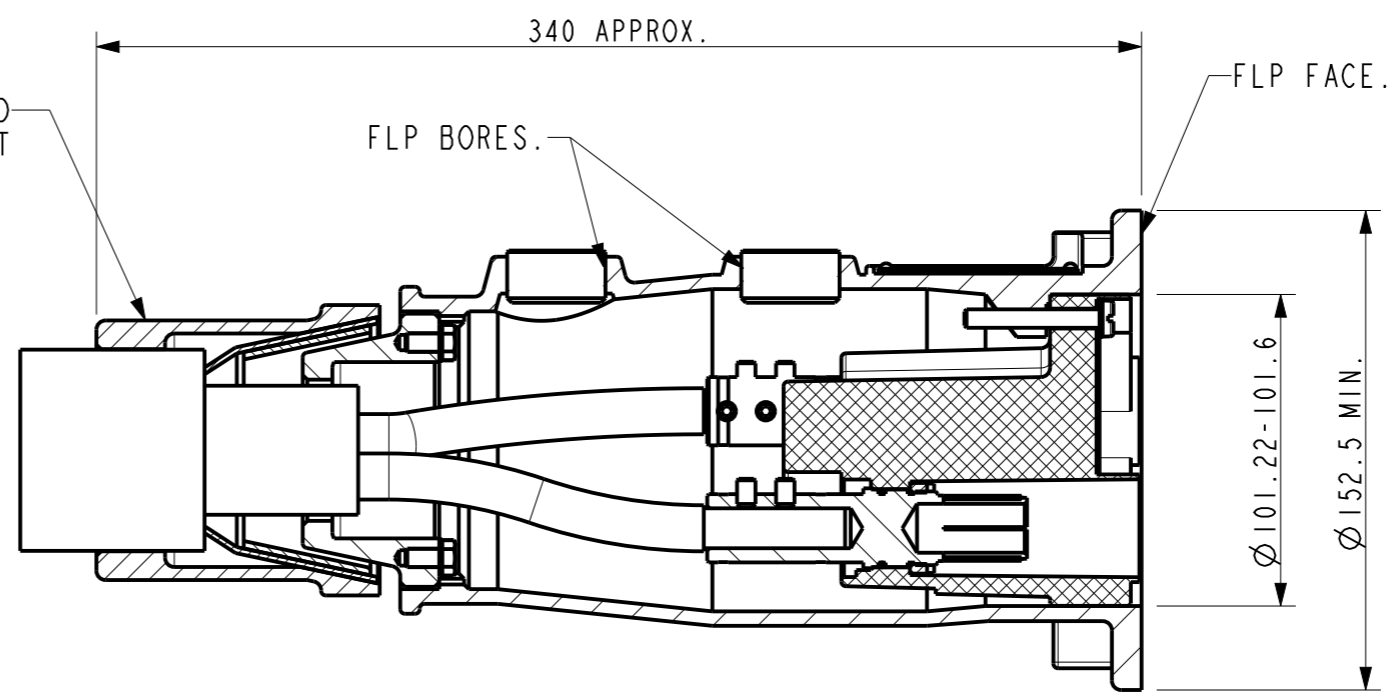
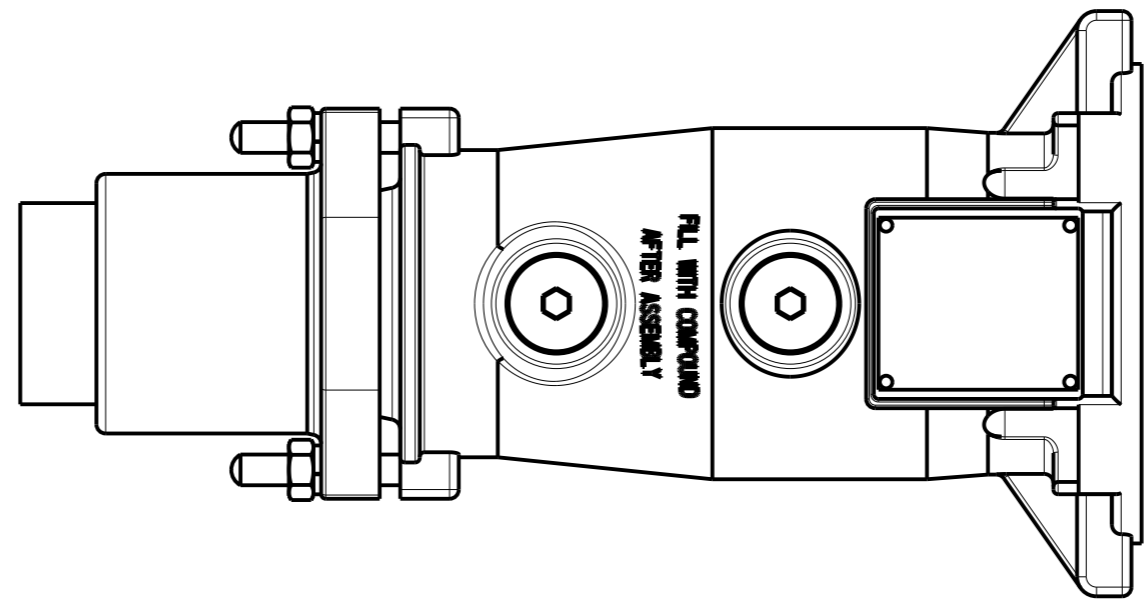


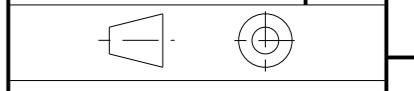
TYPICAL GLAND
ARRANGEMENT



SECTION Z-Z



DRAWING No.	ISSUE No.
CP294	1



CERTIFICATE RELATED DRAWING

NO MODIFICATIONS PERMITTED
WITHOUT THE APPROVAL OF
THE TECHNICAL MANAGER

DO NOT SCALE

DIMENSIONS IN MILLIMETRES (mm)
MAXIMUM MACHINED SURFACE
TEXTURE $\mu m R_a 3.2$
MACHINE WHERE MARKED THUS ✓
ANGULAR TOLERANCES $\pm 1/2^\circ$

DIMENSIONAL TOLERANCES
UNLESS OTHERWISE STATED

UPTO 6	± 0.1
OVER 6 UPTO 30	± 0.2
OVER 30 UPTO 100	± 0.3
OVER 100 UPTO 300	± 0.5
OVER 300	± 0.8

TEST No.	PROCESS No.
200	---
DRAWN	AER
DATE	10/5/05
CHECKED	10/5/05 AER
APPROVED	10/5/05 AER
SCALE	13:32

DCR	DRN	10/5/05	AER
CHK	10/5/05	AER	APP
		10/5/05	AER

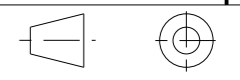
INTER-CONNECTING PIN
REMOVED.

3.3KV 500A HALF COUPLER - TYPE 33MK2A

Victor Victor Products Limited
New York Way,
Newcastle upon Tyne,
NE27 0QF, United Kingdom.

DRAWING No.	ISSUE No.
SHEET 1 OF 2	
CP294	1

DRAWING No.	ISSUE No.
CP294	0



CERTIFICATE RELATED DRAWING

NO MODIFICATIONS PERMITTED WITHOUT THE APPROVAL OF THE TECHNICAL MANAGER

DO NOT SCALE

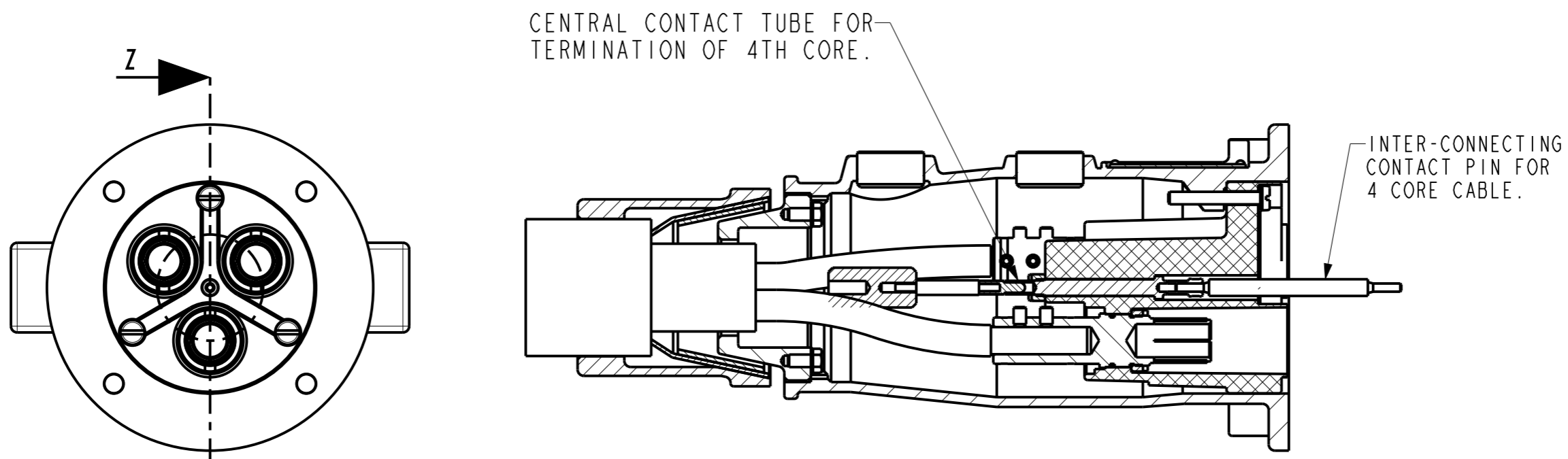
DIMENSIONS IN MILLIMETRES (mm)
 MAXIMUM MACHINED SURFACE
 TEXTURE $\mu m Ra$ 3.2
 MACHINE WHERE MARKED THUS ✓
 ANGULAR TOLERANCES $\pm 1/2^\circ$

DIMENSIONAL TOLERANCES UNLESS OTHERWISE STATED

UPTO 6	± 0.1
OVER 6 UPTO 30	± 0.2
OVER 30 UPTO 100	± 0.3
OVER 100 UPTO 300	± 0.5
OVER 300	± 0.8

TEST No.	PROCESS No.
200	---
DRAWN	AER
DATE	29/10/12
CHECKED	29/10/12 AER
APPROVED	29/10/12 HD
SCALE	13:32

DRAWING No.	ISSUE No.
SHEET 2 OF 2	
CP294	0



CENTRAL CONTACT TUBE FOR TERMINATION OF 4TH CORE.

INTER-CONNECTING CONTACT PIN FOR 4 CORE CABLE.

SECTION Z-Z

ALL OTHER DETAILS AS SHEET 1.

DCR	DRN	29/10/12	AER
CHK	APP	29/10/12	HD

SHEET 2 INTRODUCED.

3.3KV 500A HALF COUPLER - TYPE 33MK2A WITH CENTRE PILOT.

Victor Victor Products Limited
 New York Way,
 Newcastle upon Tyne,
 NE27 0QF, United Kingdom.