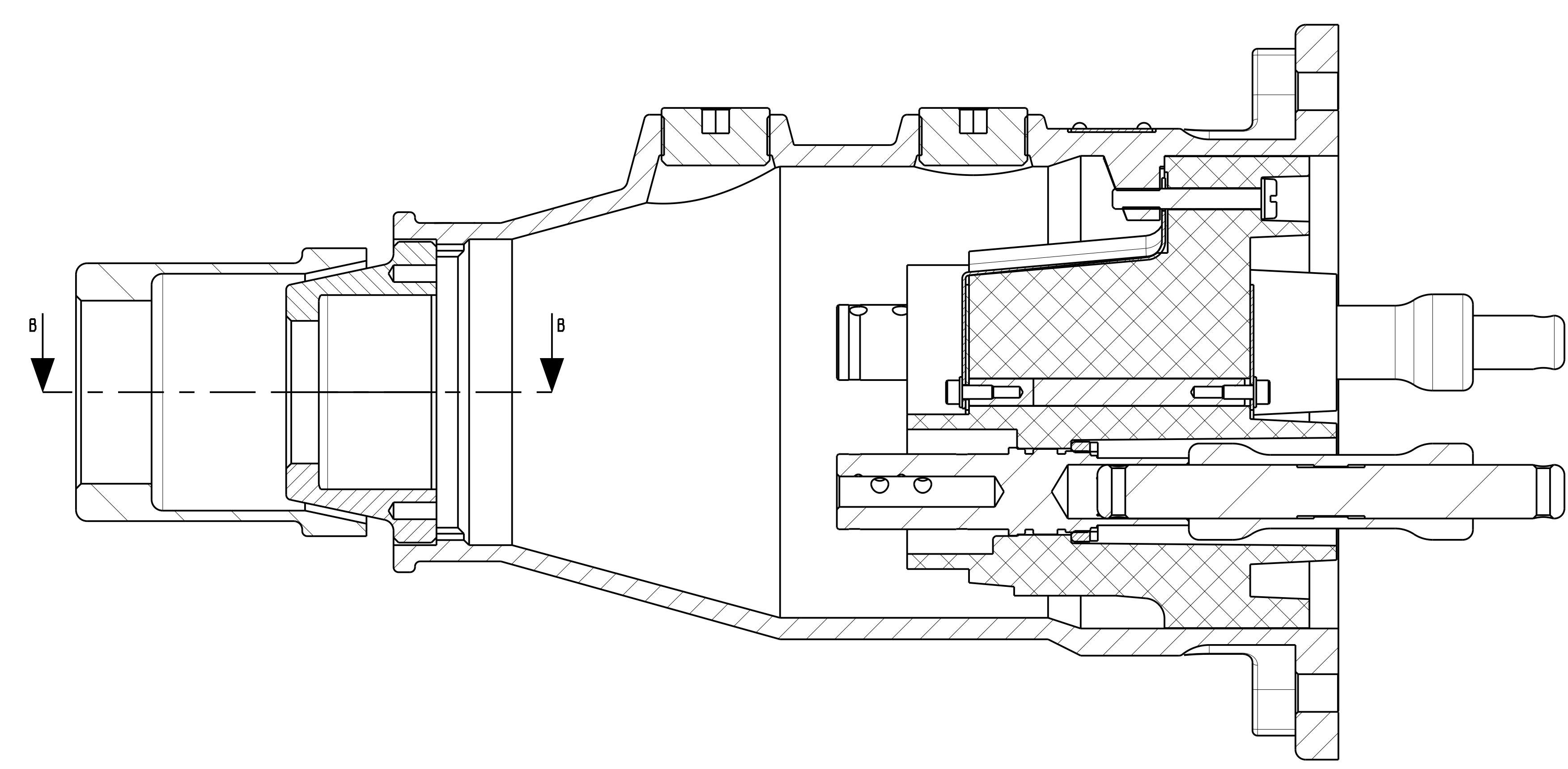
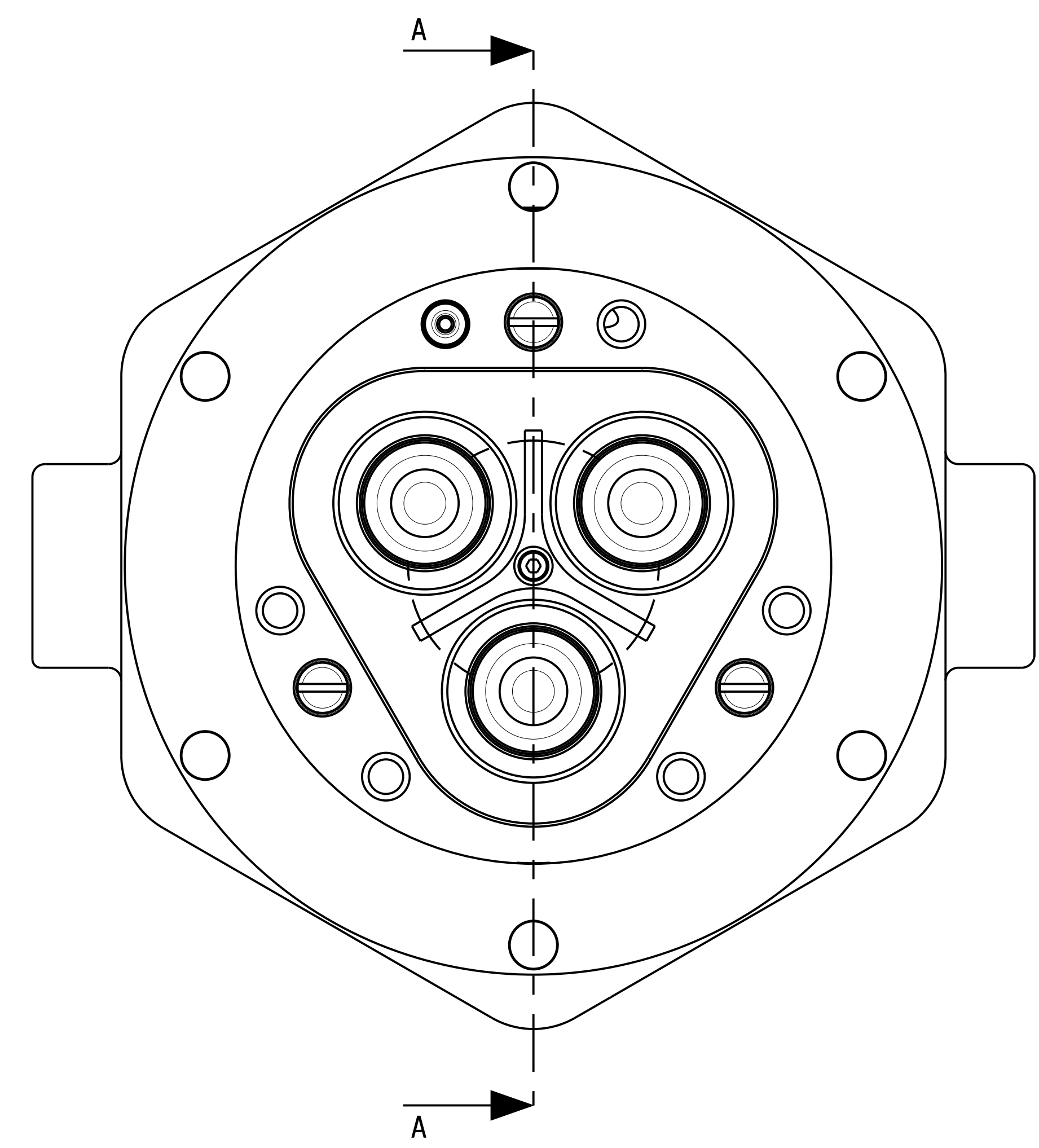
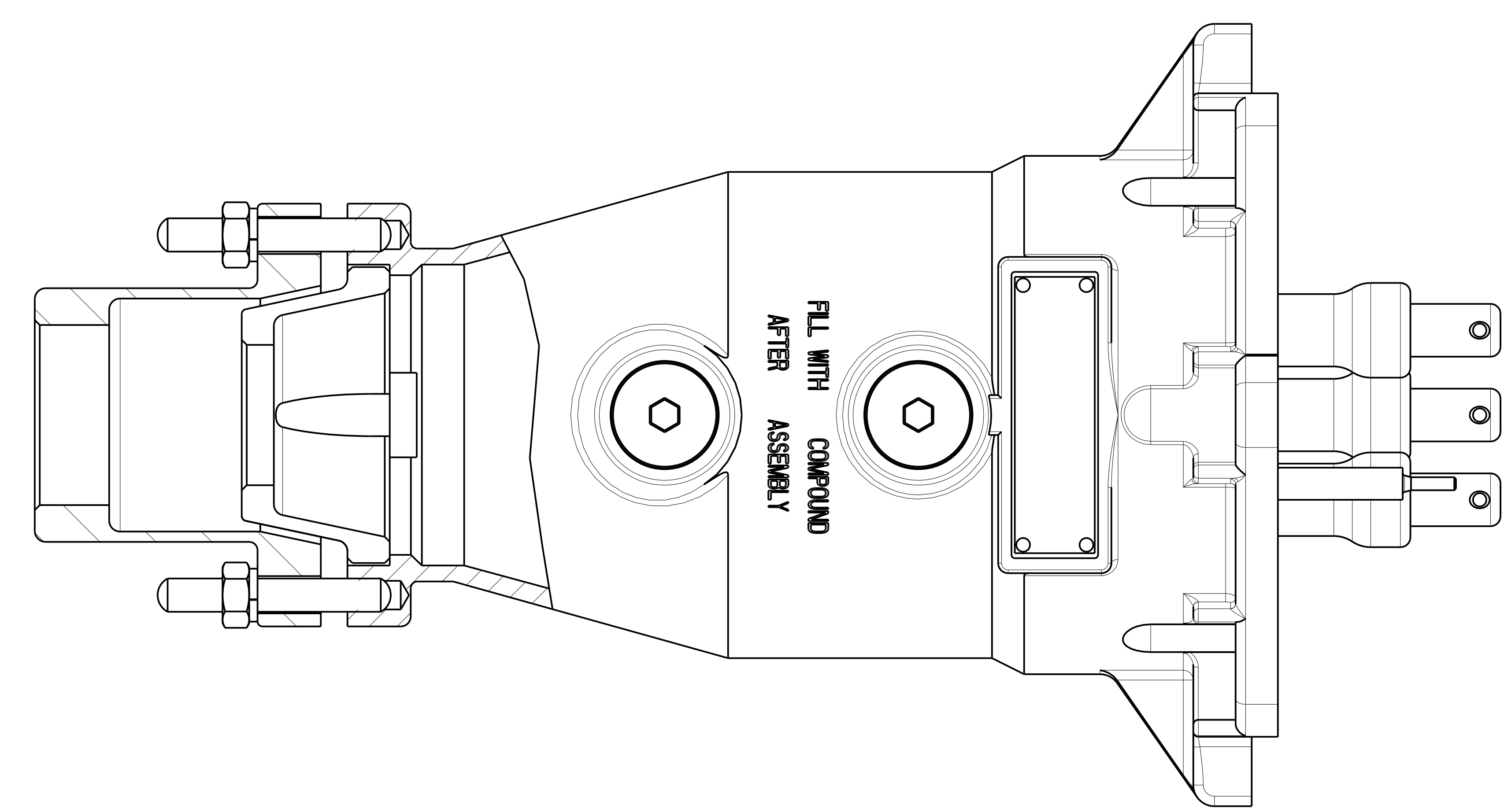


CERTIFICATE RELATED DRAWING
NO MODIFICATIONS PERMITTED WITHOUT THE APPROVAL OF THE TECHNICAL MANAGER



SECTION A-A



SECTION B-B

FOR DIMENSIONS SEE SHEET 3.

DO NOT SCALE

DIMENSIONS IN MILLIMETRES (mm)
MAXIMUM MACHINED SURFACE
TEXTURE $\mu m Ra 3.2$
MACHINE WHERE MARKED THIS
ANGULAR TOLERANCES $\pm 1/2^\circ$

DIMENSIONAL TOLERANCES UNLESS OTHERWISE STATED
UP TO 6 ± 0.1
OVER 6 UP TO 30 ± 0.2
OVER 30 UP TO 100 ± 0.3
OVER 100 UP TO 300 ± 0.5
OVER 300 ± 0.8

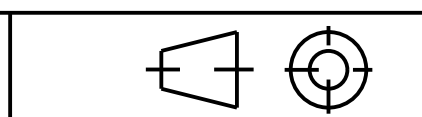
TEST No.	PROCESS No.
200	---
DRAWN	AER
DATE	10/5/05
CHECKED	10/5/05 AER
APPROVED	10/5/05 AER
SCALE	1:1

0 DCR DRN 10/5/05 AER
CHK 10/5/05 AER APP 10/5/05 AER
DRAWING INTRODUCED.

6.6kV 500A HALF COUPLER - 66MK2A
WITH 6 AUXILIARIES FITTED.

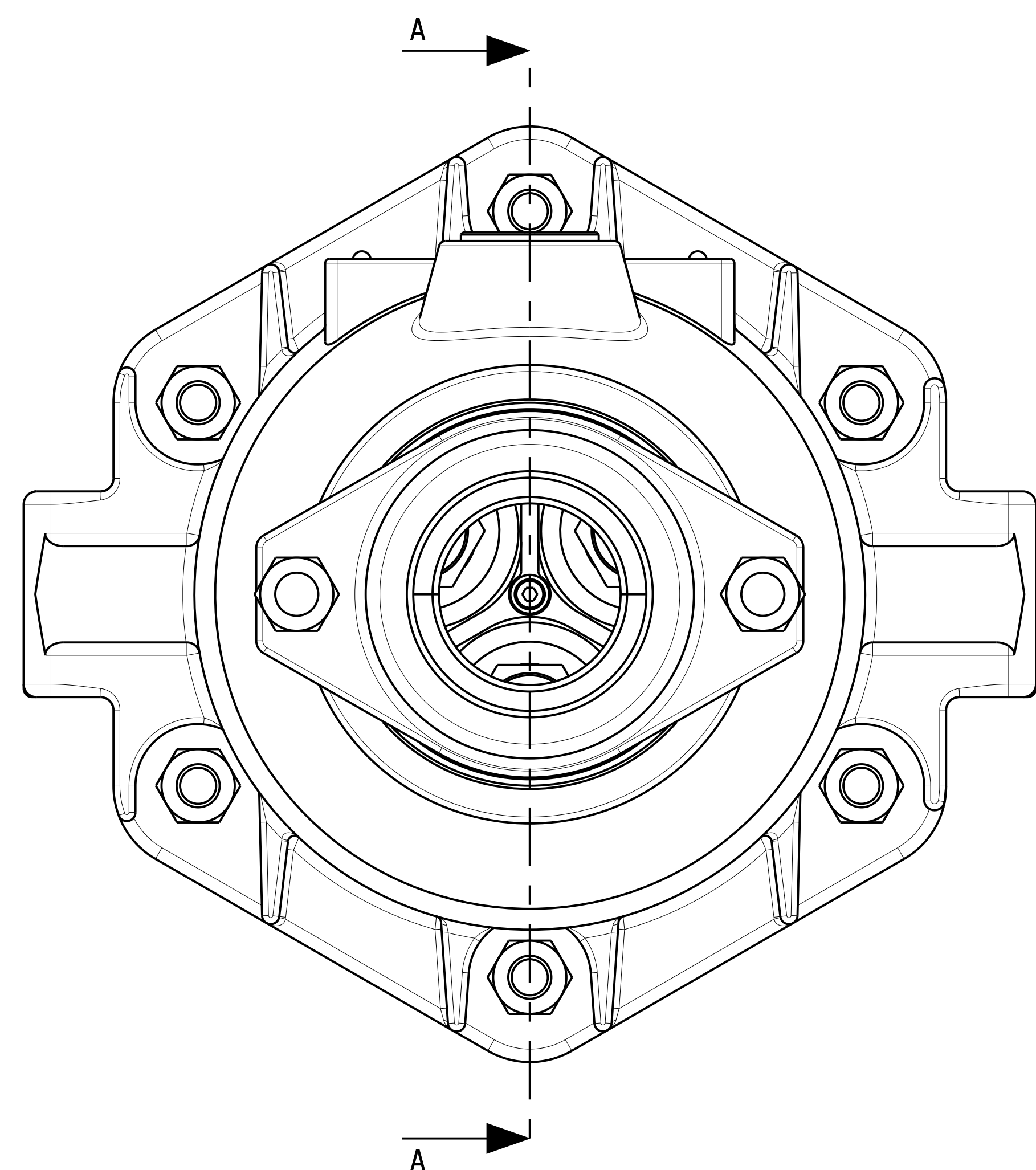
Victor Products Limited
Unit 3A, Tyne Dock East Side,
Port of Tyne, South Shields,
Tyne and Wear, NE33 5SQ,
United Kingdom.

DRAWING No. CP280
SHEET 1 OF 3
ISSUE No. 0



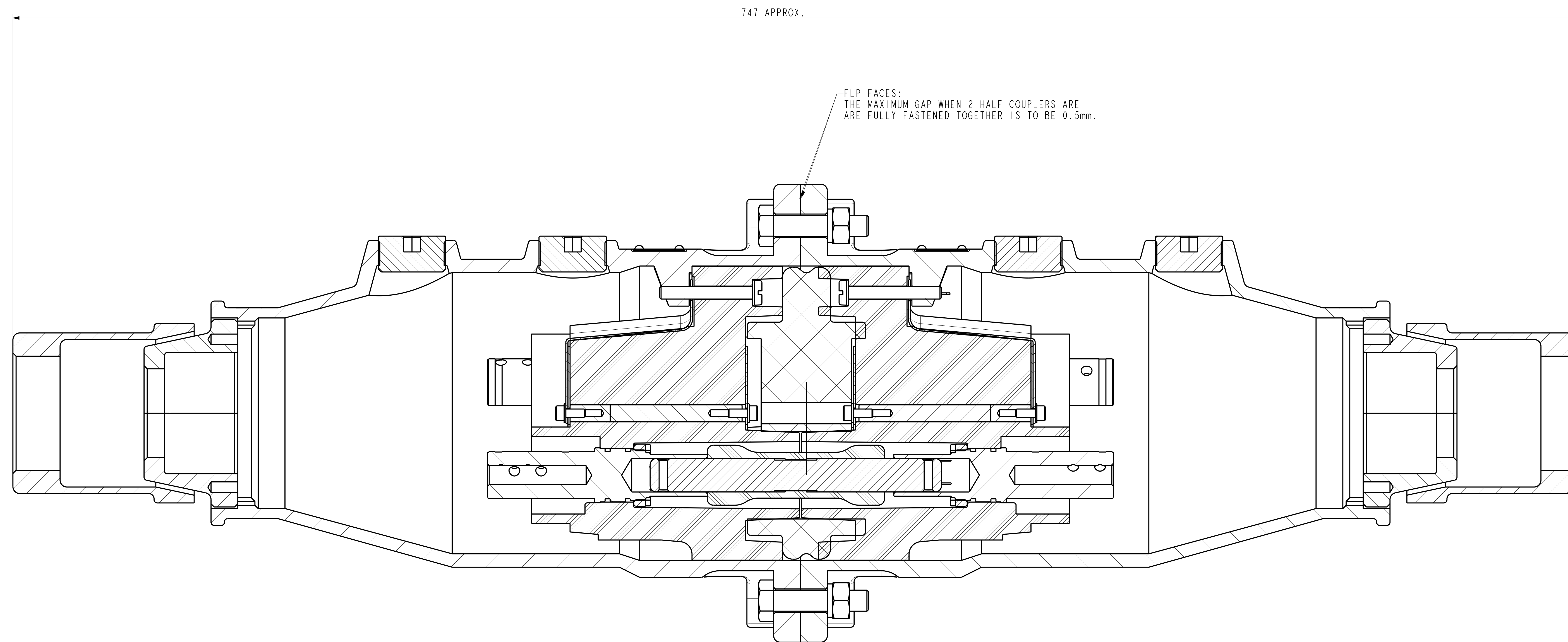
CERTIFICATE RELATED DRAWING

NO MODIFICATIONS PERMITTED WITHOUT THE APPROVAL OF THE TECHNICAL MANAGER



A →

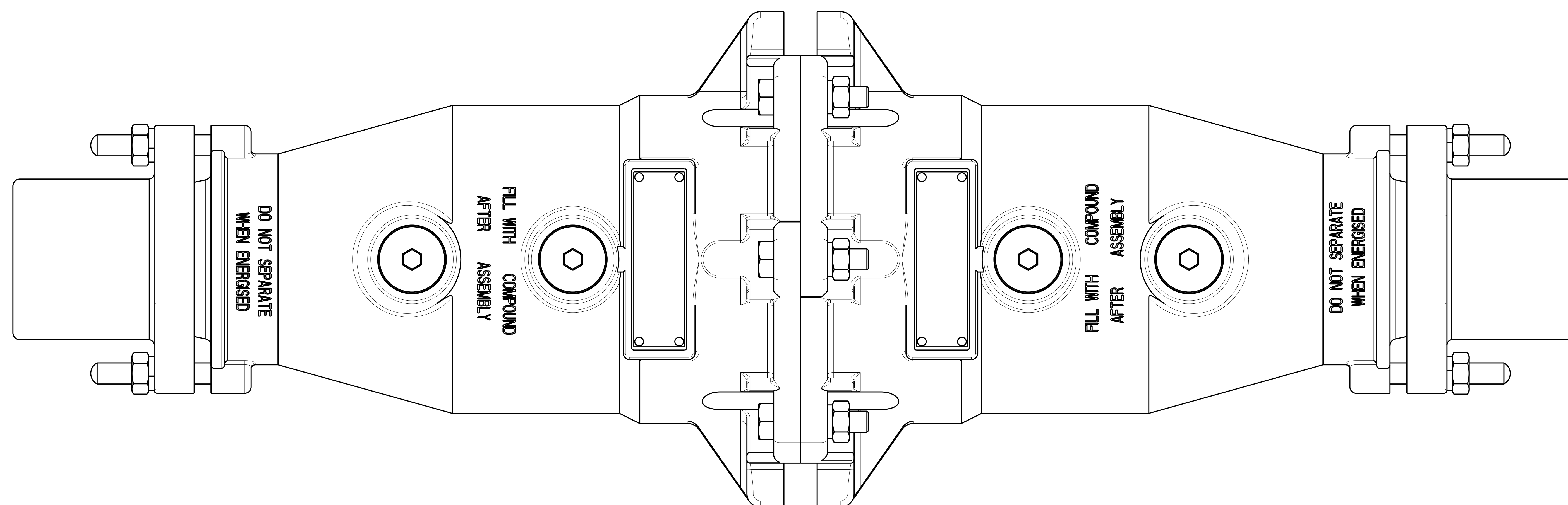
← A



747 APPROX.

FLP FACES:
THE MAXIMUM GAP WHEN 2 HALF COUPLERS ARE FULLY FASTENED TOGETHER IS TO BE 0.5mm.

SECTION A-A



FOR FURTHER DIMENSIONS SEE SHEET 3.

DO NOT SCALE

DIMENSIONS IN MILLIMETRES (mm)
MAXIMUM MACHINED SURFACE
TEXTURE $\mu\text{m Ra } 3.2$
MACHINE WHERE MARKED THIS ✓
ANGULAR TOLERANCES $\pm 1/2^\circ$
DIMENSIONAL TOLERANCES UNLESS OTHERWISE STATED
UP TO 6 ± 0.1
OVER 6 UP TO 30 ± 0.2
OVER 30 UP TO 100 ± 0.3
OVER 100 UP TO 300 ± 0.5
OVER 300 ± 0.8

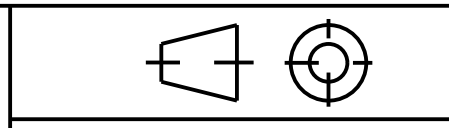
TEST No.	PROCESS No.
200	---
DRAWN	AER
DATE	10/5/05
CHECKED	10/5/05 AER
APPROVED	10/5/05 AER
SCALE	1:1

0 DCR DRN 10/5/05 AER
CHK 10/5/05 AER APP 10/5/05 AER
DRAWING INTRODUCED.

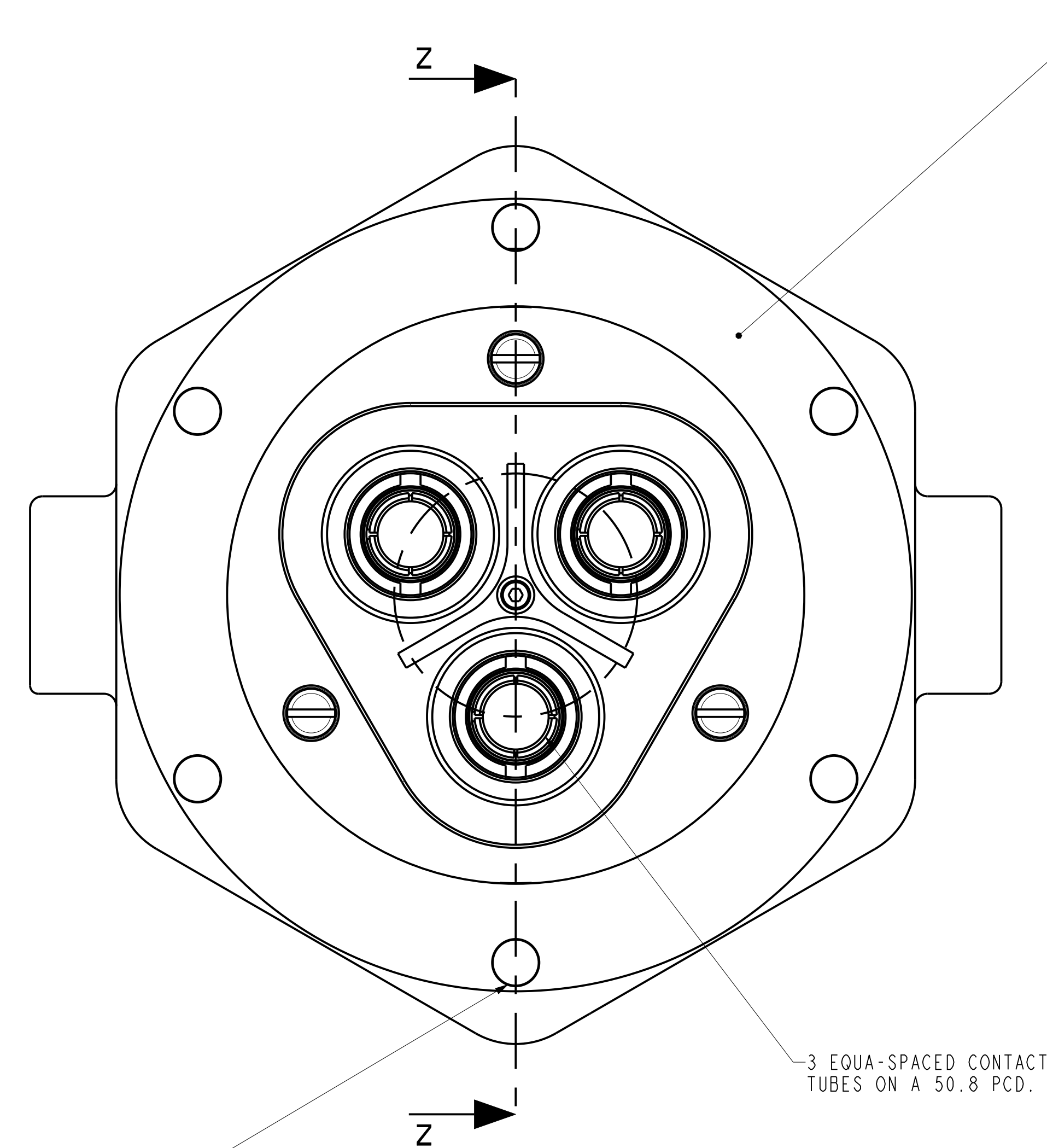
6.6KV 500A COUPLER ASSEMBLY - TYPE 66MK2A

Victor Products Limited
Unit 3A, Tyne Dock East Side,
Port of Tyne, South Shields,
Tyne and Wear, NE33 5SQ,
United Kingdom.

DRAWING No. ISSUE No.
SHEET 2 OF 3
CP280 0

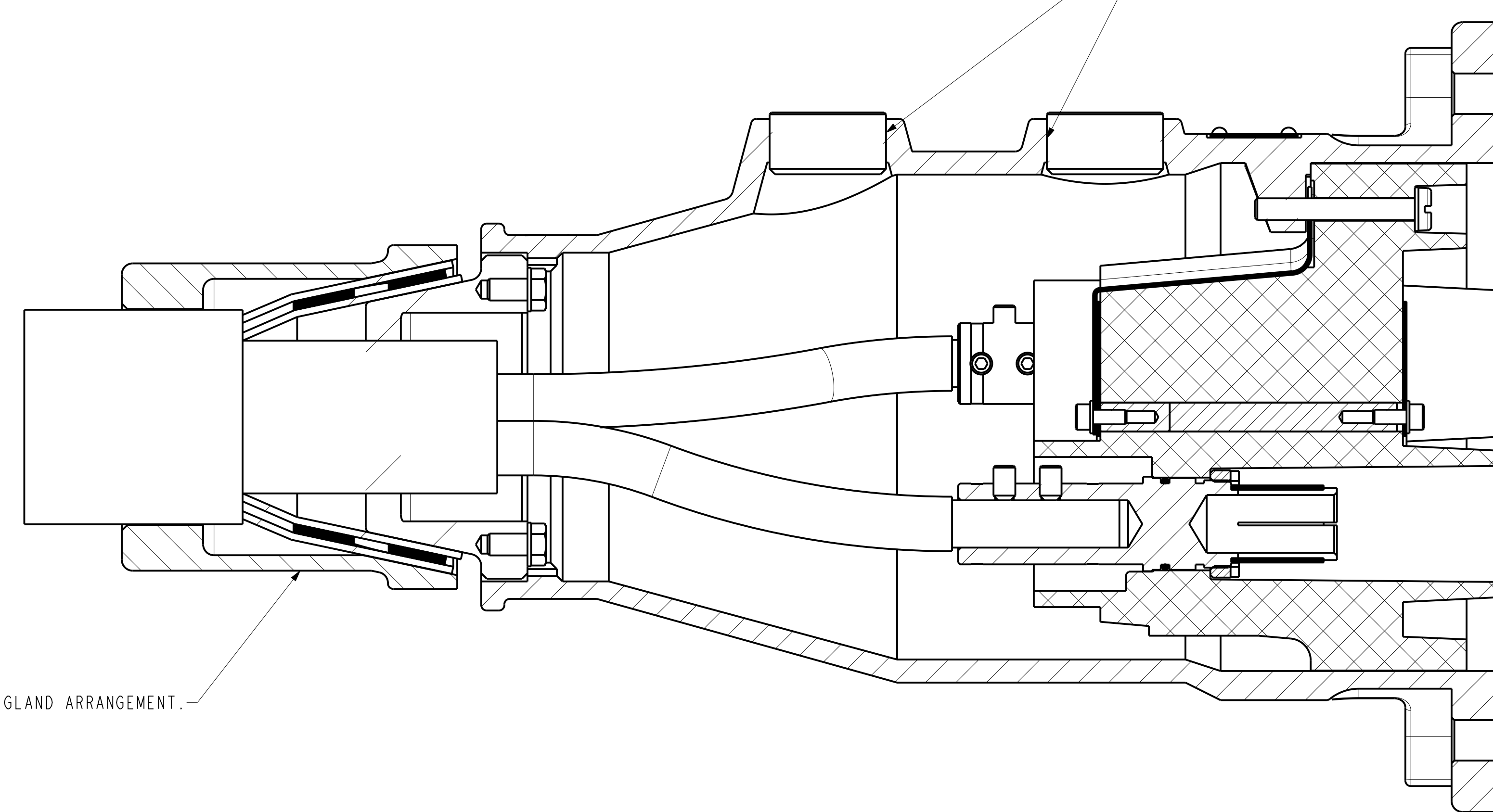


CERTIFICATE RELATED DRAWING
NO MODIFICATIONS PERMITTED
WITHOUT THE APPROVAL OF
THE TECHNICAL MANAGER



FLP FACE:
LENGTH OF PATH 25mm. MIN.
MAX. GAP WHEN FITTED TO
ASSOCIATED EQUIPMENT TO BE .5mm.

FLP THREADS.

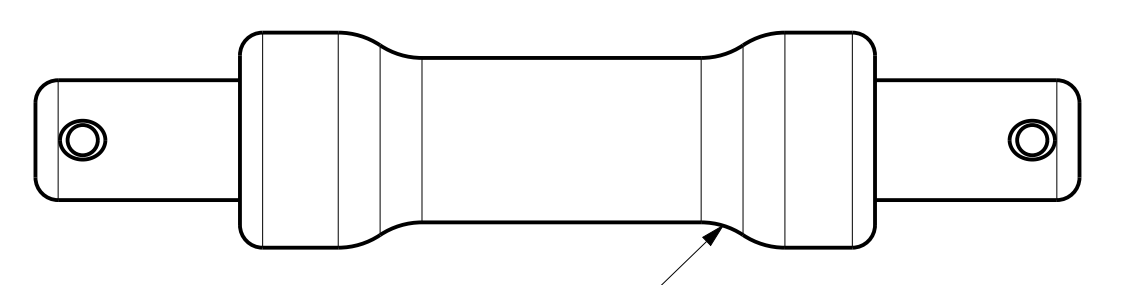


TYPICAL GLAND ARRANGEMENT.

SECTION Z-Z

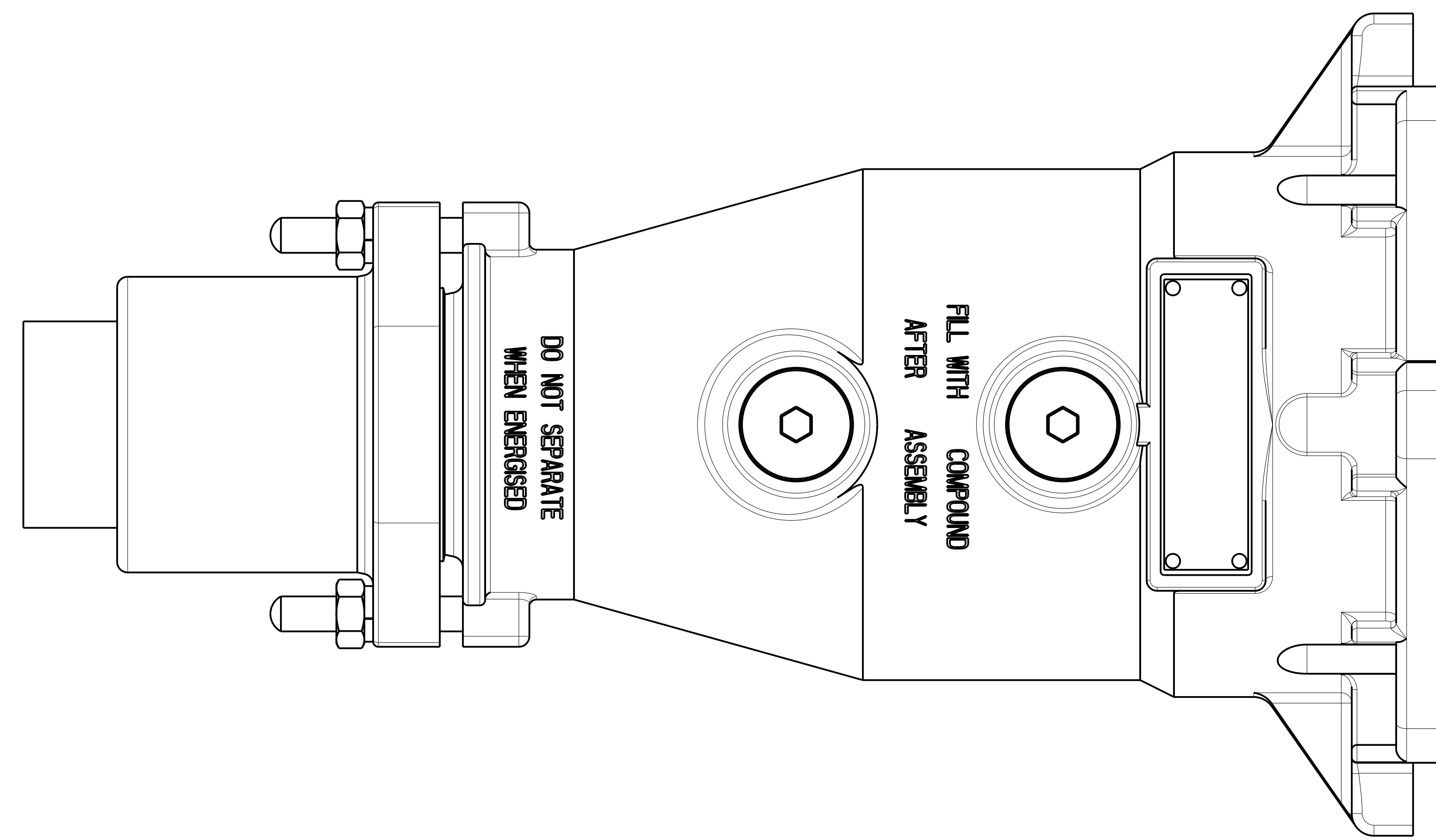
6 - HOLES Ø14.00/14.27
EQUA-SPACED ON A 177.8 P.C.D.

3 EQUA-SPACED CONTACT
TUBES ON A 50.8 P.C.D.



INSULATION COLOURED BLUE.

CONTACT PIN FOR 6.6KV HALF COUPLER.



DO NOT SEPARATE
WHEN ENERGISED

FILL WITH COMPOUND
AFTER
ASSEMBLY

DO NOT SCALE

DIMENSIONS IN MILLIMETRES (mm)
MAXIMUM MACHINED SURFACE
TEXTURE µm Ra 3.2
MACHINE WHERE MARKED THIS ✓
ANGULAR TOLERANCES ±1/2°
DIMENSIONAL TOLERANCES
UNLESS OTHERWISE STATED
UP TO 6 ±0.1
OVER 6 UP TO 30 ±0.2
OVER 30 UP TO 100 ±0.3
OVER 100 UP TO 300 ±0.5
OVER 300 ±0.8

TEST No.	PROCESS No.
200	---
DRAWN	XX
DATE	00/00/00
CHECKED	00/00/00 XX
APPROVED	00/00/00 XX
SCALE	1:1

DCR 00000 DRN 000000 XX
CHK 00000 XX APP 000000 XX
DRAWING INTRODUCED.

6.6KV 500A HALF COUPLER - TYPE 66MK2A

Victor Victor Products Limited
Unit 3A, Tyne Dock East Side,
Port of Tyne, South Shields,
Tyne and Wear, NE33 5SQ,
United Kingdom.

DRAWING No. ISSUE No.
SHEET 3 OF 3
CP280 0