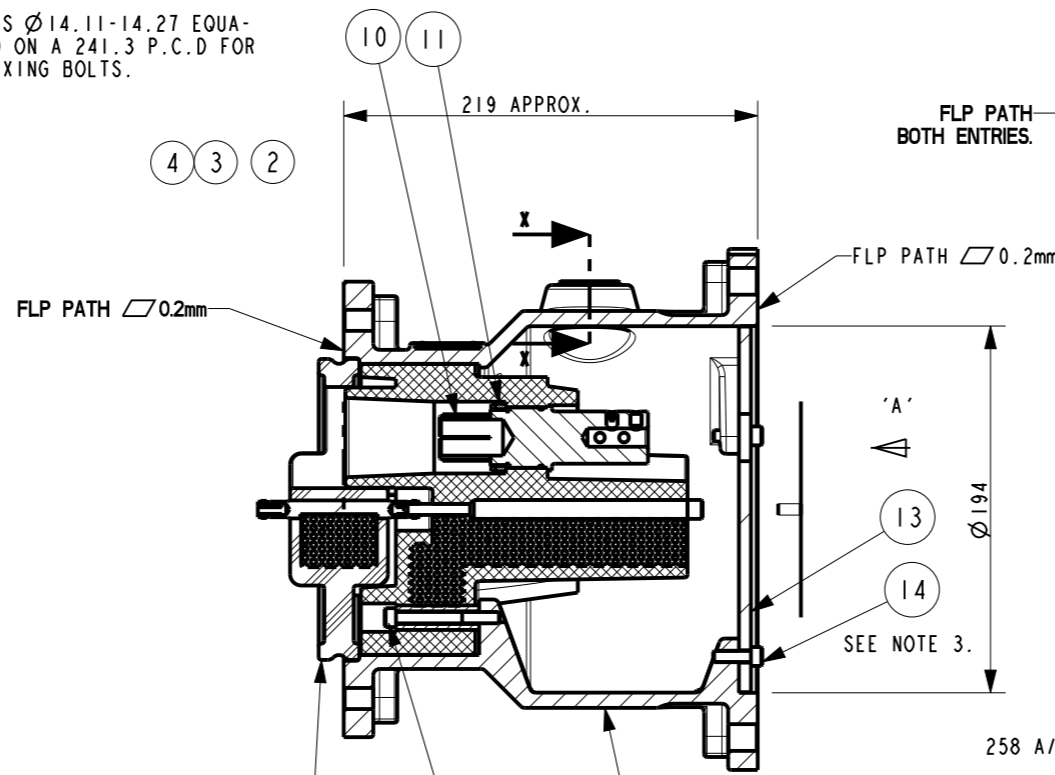


VIEW IN DIRECTION OF ARROW 'A' WITH RETAINING PLATE REMOVED.

6 HOLES Ø14.11-14.27 EQUA-SPACED ON A 241.3 P.C.D FOR M12 FIXING BOLTS.



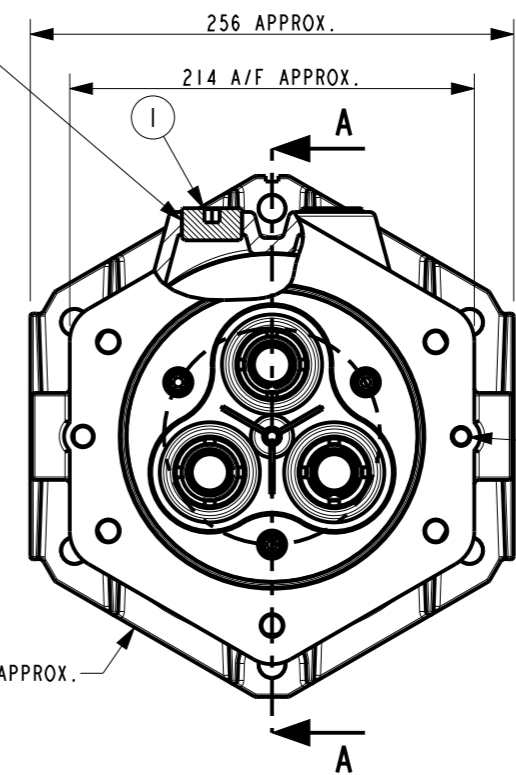
SECTION A-A

FLP PATH BOTH ENTRIES.

FLP PATH 0.2mm

'A'

SEE NOTE 3.

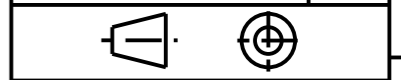


PART SECTION X-X SHOWING FILLING PORT.

REF. No.	ITEM No.	DESCRIPTION	No. OFF
1	GPC14-1	STOPPER PLUG - FLP	2
2	GPC11-19	INTERFACE CONNECTING SCREW	6
3	GPC10-7	INTERFACE CONNECTING NUT	6
4	GP256009S	INTERFACE SPRING WASHER	6
5	GPC23-2	SPRING DOWEL PIN	1
6	MP50128-	SEALING RING	1
7	MP50129	CONNECTING PIN	3
8	MP924896-	ADAPTOR BODY ASSEMBLY	1
9	MP50413-	INSULATOR	1
10	MP50124-	CONTACT TUBE - GRUBSCREWED	3
		CONTACT TUBE - CRIMPED	3
11	MP50125	CONTACT TUBE RETAINING RING	3
12	GPC12-17	INSULATOR RETAINING SCREW	3
13	MP4545	RESIN RETAINING PLATE	1
14	GP218008X	RETAINING PLATE SCREWS	3

1. THE FULLY ASSEMBLED UNIT MUST BE FILLED WITH VICTOR PRODUCTS RESIN GPC18-1.
2. REF. Nos. 6 AND 7 ARE TO BE USED WHEN CONNECTING THE ADAPTOR TO A HALF COUPLER.
3. REF. No. 14 CAN BE REMOVED AFTER FILLING AND CURING.
4. THE MINIMUM LENGTH OF FLP PATH WHEN FITTED TO ASSOCIATED EQUIPMENT IS 12mm
5. DESIGN OF INSULATOR CAN CHANGE WITH CUSTOMERS REQUIREMENTS.

DRAWING No.	ISSUE No.
CP288	1



CERTIFICATE RELATED DRAWING

NO MODIFICATIONS PERMITTED WITHOUT THE APPROVAL OF THE TECHNICAL MANAGER

DO NOT SCALE

DIMENSIONS IN MILLIMETRES (mm)
 MAXIMUM MACHINED SURFACE
 TEXTURE um Ra 3.2
 MACHINE WHERE MARKED THUS ✓

DIMENSIONAL TOLERANCES UNLESS OTHERWISE STATED

TEST No.	PROCESS No.
200	---
DRAWN	AER
DATE	27/7/09
CHECKED	27/7/09 AER
APPROVED	27/7/09 AER
SCALE	1:4

DCR	DRN	27/7/09	AER
CHK	APP	27/7/09	AER

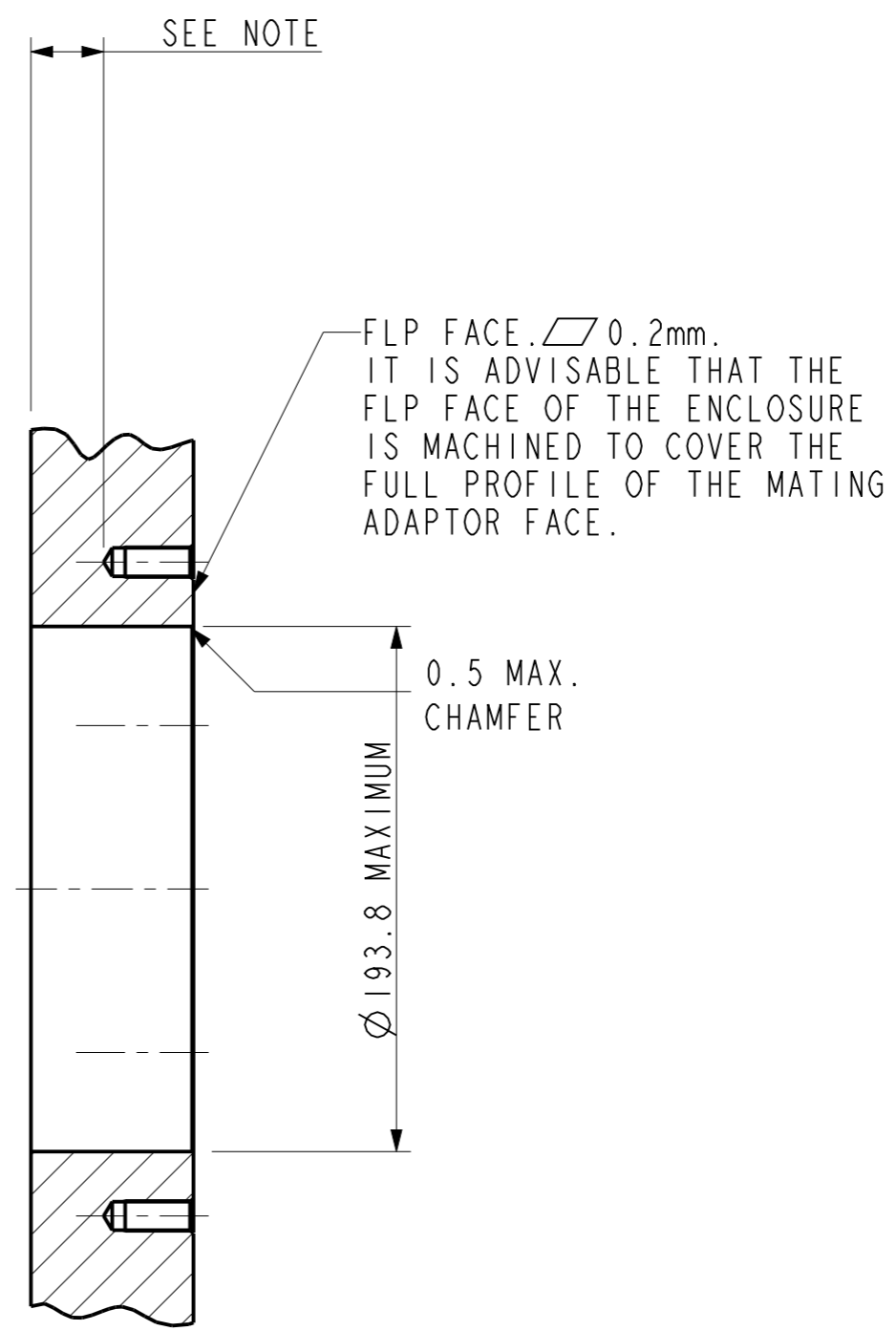
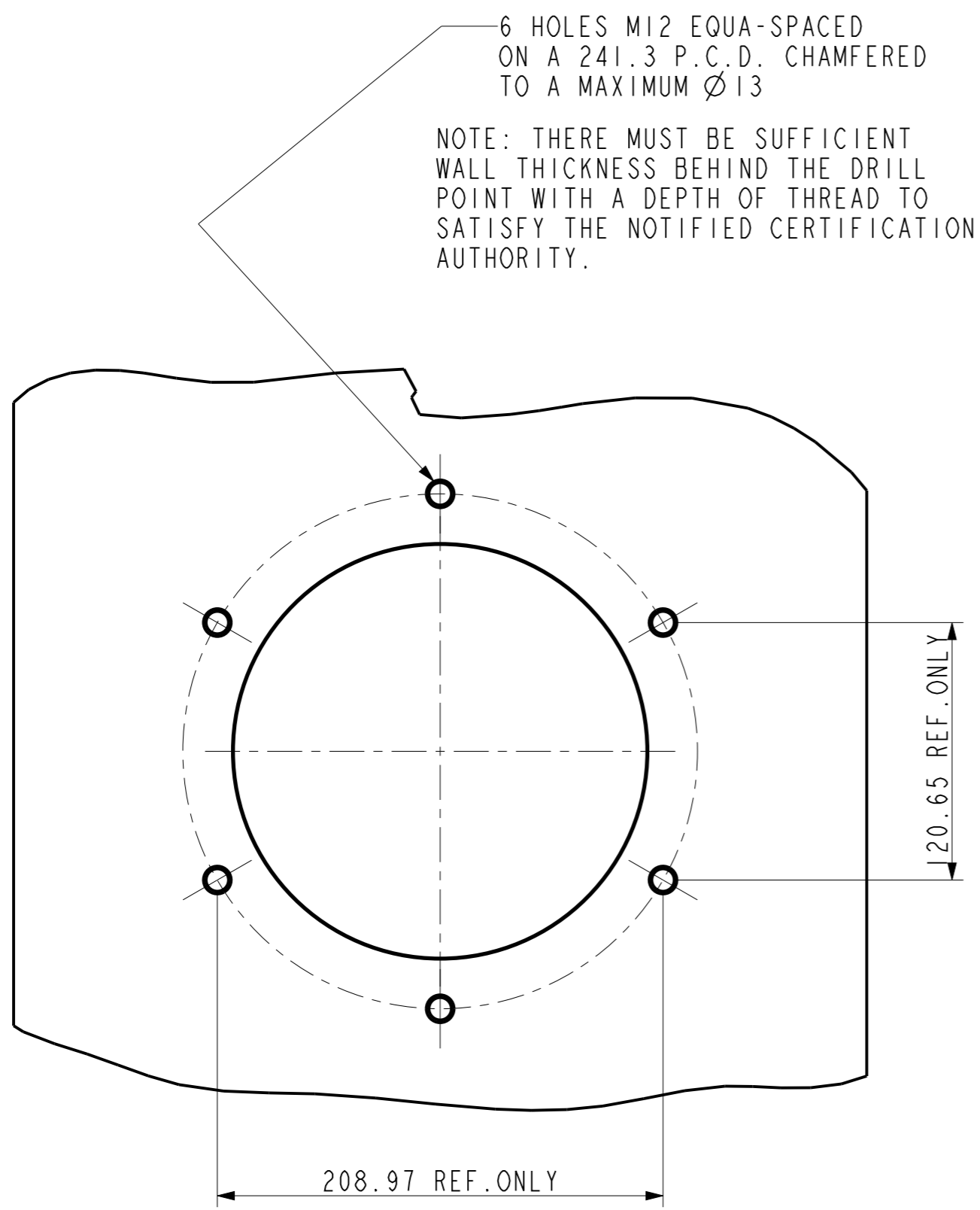
DRAWING INTRODUCED.

11kV STRAIGHT ADAPTOR - TYPE CCAXIA

Victor Victor Products Limited
 Unit 3A, Tyne Dock East Side,
 Port of Tyne, South Shields,
 Tyne and Wear, NE33 5SQ,
 United Kingdom.

DRAWING No.	ISSUE No.
SHEET 1 OF 2	
CP288	1

A
B
C
D
E
F
G
H



SECTION Z-Z

DRAWING No.	ISSUE No.
CP288	1

CERTIFICATE RELATED DRAWING

NO MODIFICATIONS PERMITTED WITHOUT THE APPROVAL OF THE TECHNICAL MANAGER

DO NOT SCALE

DIMENSIONS IN MILLIMETRES (mm)
 MAXIMUM MACHINED SURFACE
 TEXTURE $\mu m Ra$ 3.2
 MACHINE WHERE MARKED THUS

DIMENSIONAL TOLERANCES UNLESS OTHERWISE STATED

TEST No.	PROCESS No.
200	---
DRAWN	AER
DATE	27/7/09
CHECKED	27/7/09 AER
APPROVED	27/7/09 AER
SCALE	1:4

DRAWING No.	ISSUE No.
SHEET 2 OF 2	1
CP288	

DCR 2009	DRN 27/7/09	AER
CHK 27/7/09	AER APP 27/7/09	AER

DRAWING INTRODUCED.

TYPICAL 11kV INTERFACE FLANGE MOUNTING DETAILS.

Victor Victor Products Limited
 Unit 3A, Tyne Dock East Side,
 Port of Tyne, South Shields,
 Tyne and Wear, NE33 5SQ,
 United Kingdom.