

DRAWING No. ISSUE No.

CP322



CERTIFICATE RELATED DRAWING

NO MODIFICATIONS PERMITTED WITHOUT THE APPROVAL OF THE TECHNICAL MANAGER

DO NOT SCALE

DIMENSIONS IN MILLIMETRES (mm)  
 MAXIMUM MACHINED SURFACE  
 TEXTURE  $\mu\text{m Ra } 3.2$   
 MACHINE WHERE MARKED THUS

ANGULAR TOLERANCES  $\pm 1/2^\circ$

DIMENSIONAL TOLERANCES UNLESS OTHERWISE STATED

|                   |           |
|-------------------|-----------|
| UPTO 6            | $\pm 0.1$ |
| OVER 6 UPTO 30    | $\pm 0.2$ |
| OVER 30 UPTO 100  | $\pm 0.3$ |
| OVER 100 UPTO 300 | $\pm 0.5$ |
| OVER 300          | $\pm 0.8$ |

TEST No. PROCESS No.

200 - - -

DRAWN AER

DATE 21/10/11

CHECKED 21/10/11 AER

APPROVED 21/10/11 AER

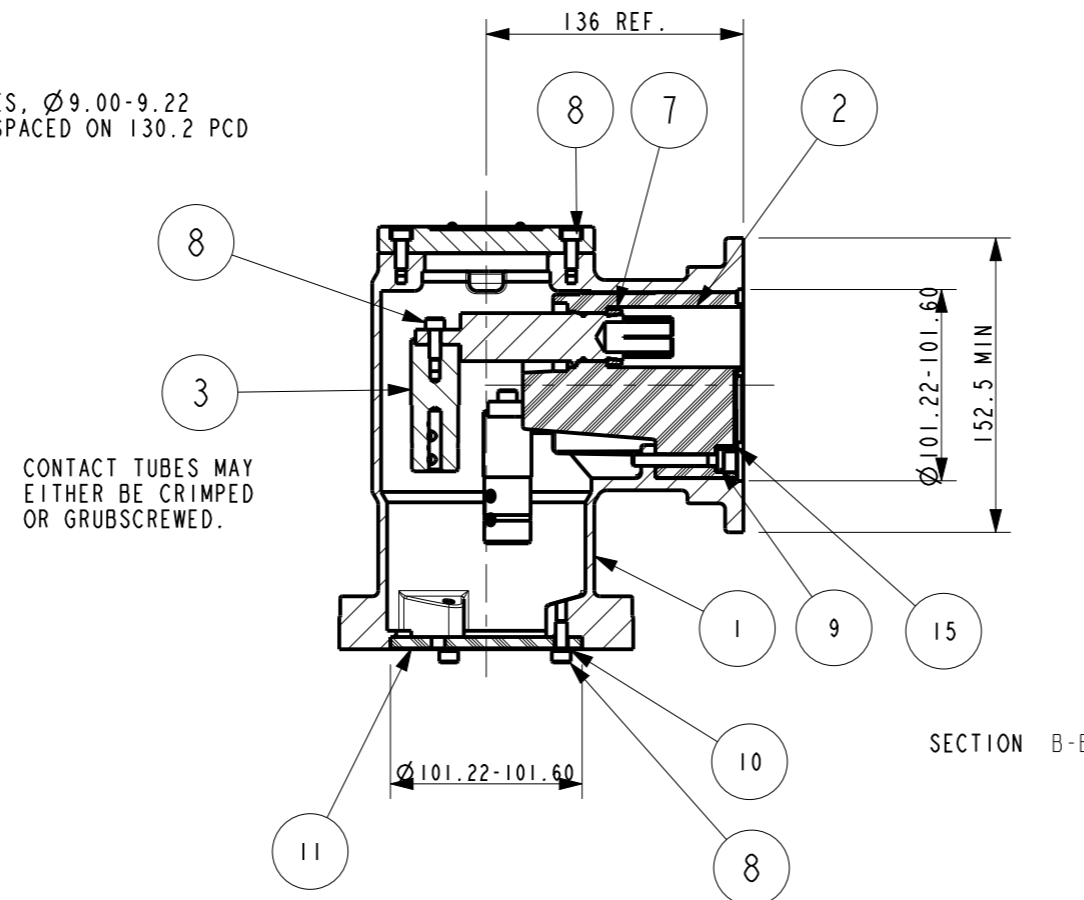
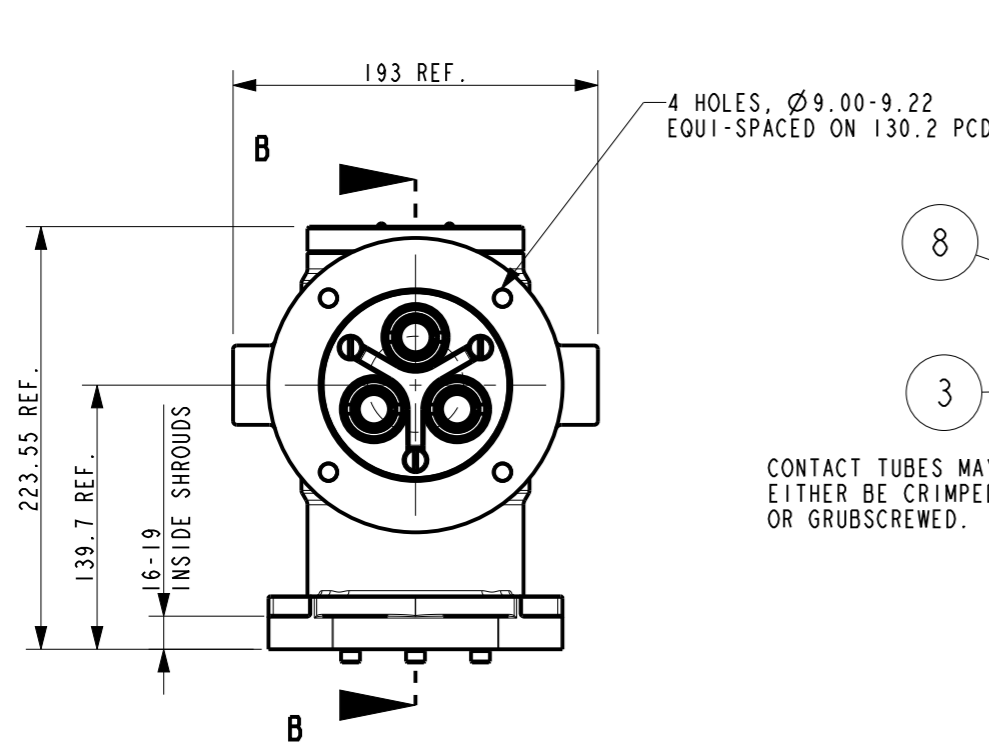
SCALE 1:4

DRAWING No. ISSUE No.

SHEET 1 OF 1

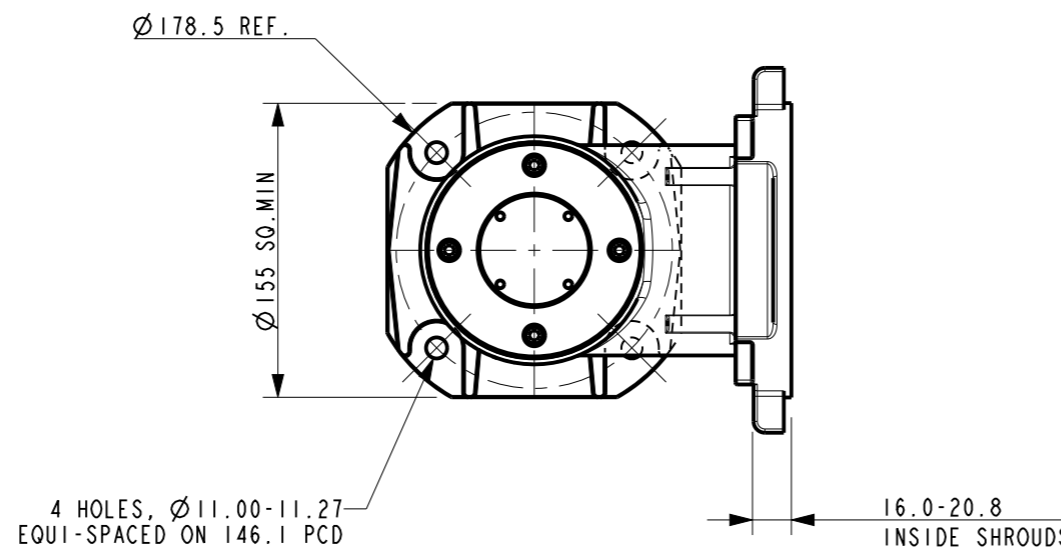
CP322

| REF No. | DESCRIPTION                 | No. OFF |
|---------|-----------------------------|---------|
| 1       | ADAPTOR BODY                | 1       |
| 2       | INSULATOR                   | 1       |
| 3       | CABLE CONNECTING TUBE       | 3       |
| 4       | LONG CONTACT TUBE           | 1       |
| 5       | SHORT CONTACT TUBE          | 1       |
| 6       | SHORT CONTACT TUBE          | 1       |
| 7       | LOCKNUT                     | 3       |
| 8       | M6 x 16 LG SKT HD CAP SCREW | 10      |
| 9       | M6 x 45 LG SCREW            | 3       |
| 10      | M6 SPRING WASHER            | 3       |
| 11      | SPREADER PLATE              | 1       |
| 12      | M8 x 50 LG HEX HD SCREW     | 1       |
| 13      | M8 SPRING WASHER            | 1       |
| 14      | M8 NUT                      | 1       |
| 15      | SEPARATOR                   | 1       |
| 16      | COVER                       | 1       |



CONTACT TUBES MAY EITHER BE CRIMPED OR GRUBSCREWED.

SECTION B-B



THIS UNIT MUST FILLED WITH VICTOR COMPOUND GPC18-1 TO COMPLY WITH CERTIFICATION.

TYPE - RAA33

|     |     |          |     |
|-----|-----|----------|-----|
| DCR | DRN | 21/10/11 | AER |
| CHK | AER | 21/10/11 | APP |
|     |     | 21/10/11 | AER |

DRAWING INTRODUCED.

RIGHT ANGLED ADAPTOR - 500A 3.3KV

**Victor** Victor Products Limited  
 Unit 3A, Tyne Dock East Side,  
 Port of Tyne, South Shields,  
 Tyne and Wear, NE33 5SQ,  
 United Kingdom.

DRAWING No. ISSUE No.  
 SHEET 1 OF 1  
 CP322